



Harper County KS

Community Health Needs Assessment



October 2012

**VVV Research & Development INC.
Olathe, KS**

Community Health Needs Assessment

Table of Contents

I Executive Summary

II Methodology

- a) CHNA Scope & Purpose
- b) Local Collaborating CHNA parties...the identity of any and all organizations with which the organization collaborated and third parties that engaged to assist with the CHNA.
- c) CHNA & Town Hall Research Process... a description of the process & methods used to conduct the CHNA, a description of how the organization considered the input of persons representing the community, and an explanation of the process/criteria used in prioritizing such needs.
- d) Community Profile (Demographics/Economics)... a description of the community served by the facility and how the community was determined. TABS 1-2

III Community Health Status

- a) Town Hall CHNA Findings: Areas of Strengths & Areas to Change and/or Improve.”
- b) County Health Area of Future Focus... a prioritized description of all of the community needs identified by the CHNA.
- c) Historical Health Statistics – TAB 3-10

IV Inventory of Existing County Health Resources

- a) Physician Manpower, Health Service Offerings, Detail Inventory of HC providers and Detail Listing local DOH.... a description of the existing health care facilities and other resources within the community available to meet the needs identified through the CHNA.

V Detail Exhibits

- a) Patient Origin & Access to Care
- b) Town Hall Attendees, Notes & Feedback... who those persons are (with qualifications)
- c) Public Notice & News

Shaded lines note IRS requirements

I. Executive Summary

[VVV Research & Development INC]

I. Executive Summary

The following report is the Community Needs Health Assessment for **Harper County KS** for 2012. Creating healthy communities requires a high level of mutual understanding and collaboration with community individuals and partner groups. The development of this assessment brings together community health leaders and providers along with local residents to research, prioritize county health needs and to document community health delivery successes. This health assessment will serve as the foundation for community health improvement efforts for next three years. The Patient Protection and Affordable Care Act (ACA) requires a non-profit hospitals to conduct a community health needs assessment (CHNA) every three years and adopt an implementation strategy to meet the needs identified by the CHNA.

The 2012 Community Health Needs Assessment (CHNA) brings together a variety of health status information. This assessment was coordinated and produced by VVV Research & Development INC from Olathe, KS under the direction of Vince Vandehaar, MBA. Important CHNA benefits for the sponsoring local hospital and health department, as well as for the community, are as follows: 1) Increases knowledge of community health needs and resources, 2) Creates a common understanding of the priorities of the community's health needs, 3) Enhances relationships and mutual understanding between and among stakeholders, 4) Provides a basis upon which community stakeholders can make decisions about how they can contribute to improving the health of the community, 5) Provides rationale for current and potential funders to support efforts to improve the health of the community, 6) Creates opportunities for collaboration in delivery of services to the community and 7) Provides guidance to the hospital & local health department for how it can align its services and community benefit programs to best meet needs.

Key Community Health Needs Assessment Conclusions (Secondary Research)

- **KS HEALTH RANKINGS:** According to 2012 RWJ County Health Rankings study, Harper County's highest State of KS ranking (of 105 counties) was in Morbidity – Quality of Life (28th). Harper's lowest two ranking were in Mortality – Length of Life (84th) and Clinical Care– Access to Care / Quality of Care (88th).
- **TAB 1:** HarperCounty's population has not changed much over time (1.4%). Harper County's per capita is \$21,992, with a median household income of \$38,022, both below state norms. Harper has a high percentage of people living below the poverty level (12.2%).
- **TAB 2:** Harper County has an unemployment rate of 5.30%, below state norm. The percentage of children living in poverty is on par with state norms (18%). Finally, the average monthly WIC case load (per 1000) is high compared to other CAH counties (35.1 compared to 25.6).

- TAB 3: The student-to-teacher ratio is above the state average (11.5% as compared to 13.5%). The number of students eligible for the free lunch program is high at 39.1%.
- TAB 4: Harper County has a rather high percentage of teen mothers (13.5%) compared to both state and regional norms (10.1% and 9.4%, respectively). Percentage of premature births (9.7%) and births with inadequate spacing (19.6%) are also significantly higher than state norms.
- TAB 5: Total hospital discharges in Harper County have decreased and surgical percentage have fluctuated minimally.
- TAB 6: Behavioral Health cases in Harper County not seen an increase in the last three years with the exception of households needing food assistance, which has increased 17% last 3 years.
- TAB 7: Adult obesity is high (28%)but still lower than state average (30%). The number of people with physical inactivity (34%) is higher than state and local norms (24%). Adult smoking and inadequate social report are also high (20% and 23%, respectively.)
- TAB 8: Harper has a higher rate of uninsured (18%). Hospital charity care is high for Harper District #5 and has significantly increased since 2009.
- TAB 9: Mortality rates are high for Major Cardiovascular diseases and diseases of the heart. Malignant Neoplasm (cancer) rates are also a concern.
- TAB 10: The percentage of women who received mammography screenings is very low (52%) as is the percentage of adults who receive the flu shot (32.9%).

Health Priorities:

HARPER County, KS			
Town Hall Community Health Need Priorities N=235			
#	TOPICS	Votes	%
1	Service/Referral Integration between Anthony Medical Center & Harper Hospital District 5	38	16.2%
2	Alcohol and Drugs (Meth and Marijuana)	28	11.9%
3	Training for EMT/Dispatches	26	11.1%
4	Lack of family support system for kids	20	8.5%
5	Need Physical Therapy 7 days/week	17	7.2%
6	Heart Disease	15	6.4%
7	Day Care options	15	6.4%
8	Need aadditional Behavior Health services	14	6.0%
9	Mobile Kidney Dialysis	11	4.7%
10	Environmental Health - Water	10	4.3%
11	OBGYN (Delivery and Prenatal care)	9	3.8%
12	Healthier school lunches	8	3.4%
13	More affordable health insurance	8	3.4%
14	Non-English speaking patients (language barrier)	8	3.4%

Harper County KS

County Healthcare Strengths

- Senior Citizen Meals
- Access to Cardiology/Orthopedics/Urology providers
- Harper Community Foundation has money available for grants
- Two Pharmacies
- Quality Health Care Providers
- Good Family Support (for seniors)
- Good Senior / Hospital Facilities
- Good Physical Therapy
- Good HC public transportation
- Great Imaging Services
- Stroke-ready classification
- Fire Department / 24 hour Paramedic
- Dentists / Eye Doctors
- Food Program for Kids (Summer)
- Good Quality of Life
- Access to Wellness/Fitness Facilities
- Several long-term care choices
- Quality Health Department services

II. Methodology

[VVV Research & Development INC]

II. Methodology

a. Scope and Purpose

The new federal Patient Protection and Affordable Care Act requires that each registered 501(c)3 hospital conduct a Community Health Needs Assessment (CHNA) at least once every three years and adopt a strategy to meet community health needs. Any hospital who has filed a 990 will be required to conduct a CHNA. IRS Notice 2011-52 was released in late fall of 2011 to give notice and request comments.

JOB #1: Meet/Report IRS 990 Required Documentation

1. A description of the process and methods used to conduct the CHNA;
2. The identity of any and all organizations with which the organization collaborated with and third parties that it engaged to assist with the CHNA;
3. A description of how the organization considered the input of persons representing the community (e.g., through meetings, focus groups, interviews, etc.), who those persons are, and their qualifications;
4. A prioritized description of all of the community needs identified by the CHNA and an explanation of the process and criteria used in prioritizing such needs;
5. A description of the existing health care facilities and other resources within the community available to meet the needs identified through the CHNA; and
6. A prioritized description of all of the community needs identified by the CHNA and an explanation of the process and criteria used in prioritizing.

Section 501(r) provides that a CHNA must take into account input from persons who represent the broad interests of the community served by the hospital facility, including individuals with special knowledge of or expertise in public health. Under the Notice, the persons consulted must also include

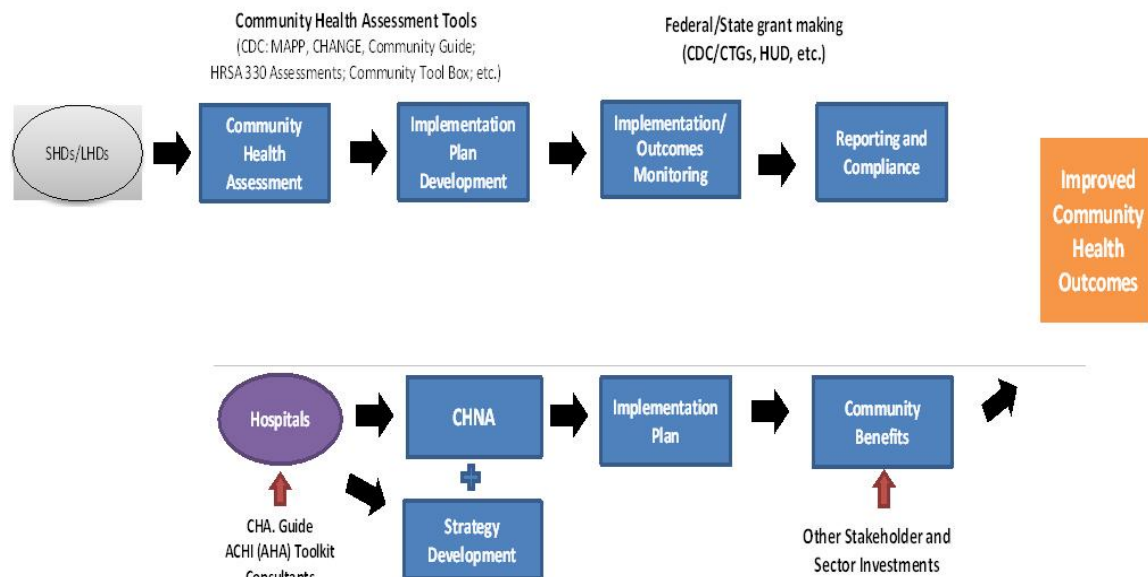
- a. Government agencies with current information relevant to the health needs of the community and
- b. Representatives or members in the community that are medically underserved, low-income, minority populations, and populations with chronic disease needs. In addition, a hospital organization may seek input from other individuals and organizations located in or serving the hospital facility's defined community (e.g., health care consumer advocates, academic experts, private businesses, health insurance and managed care organizations, etc.).

JOB #2: Making a CHNA Widely Available to the Public The Notice provides that a CHNA will be considered to be "conducted" in the taxable year that the written report of the CHNA findings is made widely available to the public. The Notice also indicates that the IRS intends to pattern its rules for making a CHNA "widely available to the public" after the rules currently in effect for Forms 990. Accordingly, an organization would make a facility's written report widely available by posting the final report on its website either in the form of (1) the report itself, in a readily accessible format, or (2) a link to another organization's website, along with instructions for accessing the report on that website.

The Notice clarifies that an organization must post the CHNA for each facility until the date on which its subsequent CHNA for that facility is posted.

JOB #3: Adopt an Implementation Strategy (Hospital) Section 501(r) requires a hospital organization to adopt an implementation strategy to meet the needs identified through each CHNA. The Notice defines an “implementation strategy” as a written plan that addresses each of the needs identified in a CHNA by either (1) describing how the facility plans to meet the health need, or (2) identifying the health need as one that the facility does not intend to meet and explaining why the facility does not intend to meet it. A hospital organization may develop an implementation strategy in collaboration with other organizations, which must be identified in the implementation strategy. As with the CHNA, a hospital organization that operates multiple hospital facilities must have a separate written implementation strategy for each of its facilities.

Great emphasis has been given to work hand-in-hand with leaders from both hospitals and the local county health department. As seen below a comprehensive Community Health Needs Assessment is required by both to “improve community health outcomes.” A common approach has been adopted to create the CHNA, leading to aligned implementation plans and community reporting.



a2_Community Health Needs Assessment

Notice and Request for Comments Regarding the Community Health Needs Assessment Requirements for Tax-exempt Hospitals

IRS Notice 2011-52

EXECUTIVE OVERVIEW

Applicability of CHNA Requirements to “Hospital Organizations”

The CHNA requirements apply to “**hospital organizations**,” which are defined in Section 501(r) to include (1) organizations that operate one or more state-licensed hospital facilities, and (2) any other organization that the Treasury Secretary determines is providing hospital care as its principal function or basis for exemption.

How and When to Conduct a CHNA

Under Section 501(r), a hospital organization is required to conduct a CHNA for each of its hospital facilities once every three taxable years. *The CHNA must take into account input from persons representing the community served by the hospital facility and must be made widely available to the public.* The CHNA requirements are effective for taxable years beginning after March 23, 2012. As a result, a hospital organization with a June 30 fiscal year end must conduct an initial CHNA for each of its hospital facilities by June 30, 2013, either during the fiscal year ending June 30, 2013 or during either of the two previous fiscal years.

Determining the Community Served

A CHNA must identify and assess the health needs of the **community served** by the hospital facility. Although the Notice suggests that geographic location should be the primary basis for defining the community served, it provides that the organization may also take into account the target populations served by the facility (e.g., children, women, or the aged) and/or the facility’s principal functions (e.g., specialty area or targeted disease). *A hospital organization, however, will not be permitted to define the community served in a way that would effectively circumvent the CHNA requirements (e.g., by excluding medically underserved populations, low-income persons, minority groups, or those with chronic disease needs).*

Persons Representing the Community Served

Section 501(r) provides that a CHNA must take into account input from **persons who represent the broad interests of the community** served by the hospital facility, including individuals with special knowledge of or expertise in public health. Under the Notice, the persons consulted must also include:

- (1) government agencies with current information relevant to the health needs of the community and
- (2) representatives or members of medically underserved, low-income, and minority populations, and populations with chronic disease needs, in the community. In addition, a hospital organization may seek input from other individuals and organizations located in or serving the hospital facility’s defined community (e.g., health care consumer advocates, academic experts, private businesses, health insurance and managed care organizations, etc.).

Required Documentation The Notice provides that a hospital organization will be required to separately document the CHNA for each of its hospital facilities in a **written report** that includes

the following information: 1) a description of the community served by the facility and how the community was determined; 2) a description of the process and methods used to conduct the CHNA; 3) the identity of any and all organizations with which the organization collaborated and third parties that it engaged to assist with the CHNA; 4) a description of how the organization considered the input of persons representing the community (e.g., through meetings, focus groups, interviews, etc.), who those persons are, and their qualifications;

5) a prioritized description of all of the community needs identified by the CHNA and an explanation of the process and criteria used in prioritizing such needs; and 6) a description of the existing health care facilities and other resources within the community available to meet the needs identified through the CHNA.

Making a CHNA Widely Available to the Public

The Notice provides that a CHNA will be considered to be “**conducted**” in the taxable year that the written report of the CHNA findings is made **widely available to the public**. The Notice also indicates that the IRS intends to pattern its rules for making a CHNA “widely available to the public” after the rules currently in effect for Forms 990. *Accordingly, an organization would make a facility’s written report widely available by posting on its website either (1) the report itself, in a readily accessible format, or (2) a link to another organization’s website, along with instructions for accessing the report on that website. The Notice clarifies that an organization must post the CHNA for each facility until the date on which its subsequent CHNA for that facility is posted.*

How and When to Adopt an Implementation Strategy

Section 501(r) requires a hospital organization to adopt an implementation strategy to meet the needs identified through each CHNA. **The Notice defines an “implementation strategy” as a written plan that addresses each of the needs identified in a CHNA by either (1) describing how the facility plans to meet the health need, or (2) identifying the health need as one that the facility does not intend to meet and explaining why the facility does not intend to meet it.** A hospital organization may develop an implementation strategy in collaboration with other organizations, which must be identified in the implementation strategy. As with the CHNA, a hospital organization that operates multiple hospital facilities must have a separate written implementation strategy for each of its facilities.

Under the Notice, an implementation strategy is considered to be “**adopted**” on the date the strategy is approved by the organization’s board of directors or by a committee of the board or other parties legally authorized by the board to act on its behalf. Further, the formal adoption of the implementation strategy must occur by the end of the same taxable year in which the written report of the CHNA findings was made available to the public. For hospital organizations with a June 30 fiscal year end, that effectively means that the organization must complete and appropriately post its first CHNA no later than its fiscal year ending June 30, 2013, and formally adopt a related implementation strategy by the end of the same tax year. *This final requirement may come as a surprise to many charitable hospitals, considering Section 501(r) contains no deadline for the adoption of the implementation strategy.*

II Methodology

b) Collaborating CHNA parties

Working together to improve community health takes collaboration. Listed below is an in depth profile of the local hospitals & Health Department CHNA partners:

Harper County Health Department/Harper County Home Health Agency

Administrator: Sherry Houston, LBSW
123 N. Jennings Anthony, KS 67003-2708
Phone: 620-842-5132

The Harper County Home Health Agency opened in 1966 and public health services were added a year later through the Harper County Health Department. The agency currently offers a full array of services including Basic Health Services, Immunizations, WIC, Healthy Start, Car Seat Inspections, Family Planning Services, Disease Investigation, Public Health Emergency Preparedness Planning and short-term and long-term home health services. Anthony location is open Monday-Friday 8:00 a.m. to 5:00 p.m. Attica location is open 1st & 3rd Tuesday 9:30 a.m. – 11:30 a.m and Harper Location is open Wednesdays 9:00 a.m. – 11:30 a.m.

VISION

Harper County/Healthy Community

MOTTO

Quality Service Delivery

PURPOSE

To provide Harper County citizens with comprehensive, cost effective, and quality home health and public health services.

MISSION STATEMENT

- To provide health and environmental services that assist Harper County citizens to prevent disease, maintain health, protect the environment and promote wellness To provide leadership for the identification of unmet health needs of Harper County citizens and to facilitate solutions to these problems.
- To facilitate quality service delivery in a manner that is timely, flexible, convenient, non-discriminatory and cost effective for the citizens of Harper County.
- To cooperate with other community service agencies and organizations to improve and advance the quality of life in Harper County.
- To foster a work environment that will provide staff development and job satisfaction, promote teamwork and encourage leadership in public health and home health.
- To maintain fiscal responsibility, professional work ethics, and high standards of care.

In 2012 the agency has a number of employees that will reach milestones in the number of years they have provided quality service to the community:

Linda Patrick	Home Health Aide	28 years
Pam Fredrick	PRN Public Health RN	23 years
Heather Struble	Asst. Admin. Home Health	20 years
Rozanne Grant	Public Health RN	10 years
Teresa Goetz	Home Health RN	10 years
Roberta VonItter	PRN Home Health RN	9 years
Sherry Houston	Administrator	8 years
Betty Hammersmith	Healthy Start Home Visitor	8 years
Mary Helen McKaig	Attendant Care	7 years
Kellie Campbell	Home Health Aide	6 years
Sandra Cornelson	PH Clerk/Interpreter	5 years
Laina Berry	HHA	5 years

Kansas Home Care Association (KHCA) honored Harper County Health Department employee Heather Struble for the Kansas Home Care Administrator Honoree of the Year in 2006, Linda Patrick for the Home Care Paraprofessional of the Year at the KHCA in 2008 and Grace Gates for the KHCA Home Care Hero Honoree of the Year in 2010.

Harper Hospital District # 5

700 W. 13th Street Harper, KS 67058

Phone: 620-896-7324

CEO: Kim Cinelli

Harper Hospital District # 5 is a 25-bed critical access hospital featuring primary, emergency, acute, skilled, and Long Term Care as well as comprehensive outpatient surgery. The continuum of care enhanced by Harper's Wellness Center and Heritage Estates, an assisted living environment.

- 10 Long Term Beds
- Assisted Living Facility
- 3 Rural Health Clinics
- On-Site CT scans, Bone Density, Sonogram, and MRI diagnostics
- Recently added a full time Physical Therapist and full time Registered Sonographer.
- 21 Nurses Licensed by the Kansas State Board of Nursing
- 24 Nurse Aides Certified by the Kansas Department of Health and Environment
- 11 Ancillary Department Personnel Certified or Registered (Lab, X-Ray, Respiratory Therapy, Physical Therapy, Central Supply)
- Employees Certified in Advanced Cardiac Life Support by the American Heart Association
- Employees Certified in Cardio- Pulmonary Resuscitation (CPR) by the American Heart Association & the American Red Cross
- Membership in Dietary Manager's Association

Mission Statement

Harper Hospital provides high quality, family focused health services using stewardship of resources to the families we serve in partnership with our community.

Vision Statement

Harper Hospital is dedicated to improving the quality of life in the communities we serve.

Values

- Hospitality: Treat each person as if he or she is the most important person in our facility.
- Attitude: Caring attitude among employees whom we recognize as our most important resource.
- Responsibility: To deliver high quality, cost effective healthcare in our community.
- Personalized: Personalized care in a familiar environment of friends and neighbors.
- Excellence: To consistently exceed our customer's expectations.
- Resources: Utilizing creative ideas and concepts to exceed expectations and standards of practice.

Medical Staff Leadership

- Ralph Imlay M.D., Chief of Staff
- Janet Bradshaw D.O.,
- Dick Aldis, RPAC
- Stan Wedman, RPAC
- Chuck Caddy, RPAC
- Christy Winter, RPAC
- Donald Ransom, D.O. General Surgery
- Roger Bond, MD Cardiology
- Bibiano Ouano, MD, Urology

Anthony Medical Center

1101 E. Spring Street Anthony, KS 67003

Phone: (620) 842-5111 Toll free 1-866-842-5111.

CEO: J. Bryant Anderson

Anthony Medical Center, a multi-campus facility that combines hospital inpatient and outpatient services with primary care and wellness. Patients of all ages may be seen locally at the Anthony Primary Care Clinic or the Outpatient Specialty Clinic. AMC also operates clinics in Hardtner and Argonia, KS as well as owning and operating the Anthony Wellness Center, which serves the community's healthy lifestyle needs. Services and specialties offered at AMC include: MRI, CT Scan, Digital Mammography, Sonogram, X-ray, Bone Density Testing, Full Lab Services, Physical, Occupational, and Speech Therapies, Cardiology, Urology, Orthopaedics, Oncology/Hematology, and General Surgery. AMC also provides state of the art care in their 24-HR Emergency Room. The ER is equipped with life saving fiber optic technology, and the staff is certified in Advanced Cardiac Life Support and Advanced Trauma Life Support.

AMC is the only Emergent Stroke Ready facility in the area and has applied for Level IV Trauma Designation. Providing "Patient-Centered, Family-Focused" care for all of Harper County and the surrounding areas.

Mission Statement:

Anthony Medical Center is dedicated to providing excellence in care to all persons as they strive for individual wholeness – physically, socially and spiritually. We are further committed in our efforts to promote, preserve and restore wellness to the community through a patient-centered, family-focused approach.

Medical Staff:

- Sid Stranathan, D.O., Chief of Medical Staff
- Surgery- Scott Porter, M.D. FACS
- Oncology/Hematology - Phu V. Truong, M.D.
- Urology- Richard Steinberger, M.D.
- Orthopedics - Paul Pappademos, M.D.
- Cardiology - Michael Lloyd, D.O
- OBGYN - Ashley Robbins, M.D.

- Steven Ballard, D.O.
- Earl George, M.D.
- Jody Berry, PA-C
- Rebecca Carter, APRN
- Terri Griffiths, APRN
- Anna Jennings, PA-C
- Rita Bonetti, APRN

Sec II

b2_Consultant Qualifications



VWV Research & Development, Inc.

Company Profile: 601 N. Mahaffie, Olathe, KS 66061-6431 (913) 302-7264

VINCE VANDEHAAR, MBA

Principal Consultant & Owner of VWV Research & Development, Inc.

VWV Research & Development, Inc. was incorporated on May 28th 2009. With over 30 years of business & faculty experience in helping both providers, payors, and financial service firms obtain their strategic planning, research & development needs, Vince brings in-depth health industry knowledge, research aptitude, planning expertise, and energy. VWV Research & Development services are organized, formal processes of listening to the voice of the customer. Vince started his consulting business in May of 2009, after working for Saint Luke's Health System (SLHS) of Kansas City for 16 years. Note: Saint Luke's Hospital of Kansas City, SLHS's largest hospital, won the Malcolm Baldrige National Quality Award in March of 2003. The Baldrige examiners cited Vince's department as "Best Practice" in the areas of customer satisfaction, market research, and evaluation efforts (Kansas City Star 3/10/04).

VWV Research & Development, INC. (Olathe, KS) consultants have in-depth experience helping hospitals work with local Health Departments to engage community residents & leaders to identify gaps between existing health community resources & needs, and construct detailed strategies to meet those needs - while still adhering to the hospital's mission and budget. Over the past 20 years, Vandehaar has completed 8 comprehensive Baldrige aligned Community Health Needs Assessments for Saint Luke's of Kansas City System facilities (3 campuses) and was contracted to conduct 2 additional independent Dept. of Health consulting projects (prior to IRS 990 regs). Currently in 2012, VWV has 12 CHNA IRS aligned assessments underway for Kansas hospitals & Health Departments.

Vince Vandehaar, MBA is actively involved in the Kansas City community. He is a member the Greater Kansas City Employee Benefits Association, the Society for Healthcare Strategy & Market Development, the American Marketing Association Kansas City Chapter, and Co-Chair of the AMA Kansas City Healthcare Special Interest Group. In addition to these roles, from 2000 to 2008, Vince served as the state chairman for MHA's Data Committee and was a member of KHA's Data Taskforce.

Collaborating Consultants

Lyndsey Ogle, MA - VWV Research & Development, Inc.
Lead Project Coordinator & Planning Analyst

II. Methodology

c) CHNA & Town Hall Research Process

Our Community Health Needs Assessment process began in June of 2012. At that time a joint inquiry by Harper County Health Department, Harper Hospital District #5 and Anthony Medical Center was communicated to VVV Research & Development to explore the possibility of conducting a comprehensive IRS aligned CHNA for Harper County KS. On June 26th a conference call meeting was held (hosted by Harper County Health Dept) to Kickoff CHNA for Harper County and to review the possible CHNA collaborative options. VVV Research & Development INC. from Olathe, KS was asked to facilitate this discussion with the following agenda: VVV Research CHNA experiences, review CHNA requirements (regulations), discuss CHNA steps/options to meet IRS requirements, and to determine next steps.

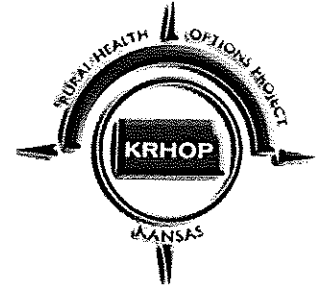
VVV CHNA Deliverables:

- Confirm Harper County KS service area meets 80/20 rule.
- Uncover/Document Basic Secondary Research – Health of County. Organized by 10 TABS.
- Conduct Town Hall Meeting to discuss Secondary data and uncover/prioritize County Health Needs
- Conduct & report CHNA Primary Research (valid N) and
- Prepare & Publish IRS aligned CHNA report to meet requirements

Following is the specific Harper County CHNA roles & responsibilities, along with a calendar of events for this project:

VVV CHNA Harper County KS Work Plan Project Timeline & Roles 2012			
Step	Date (Start-Finish)	LEAD	Task
1	6/26/2012	VVV / Harper (3)	Hold Kickoff Conference call with Health Dept and hospitals.
4	6/26/2012	VVV	Send out REQCoimmInvite Excel file. Harper Health Dept will take lead on Town Hall names/address. Both hospitals will contribute.
5	Friday 7/13/12 Noon	VVV / Harper (3)	Prepare/send out PR story to local media announcing upcoming CHNA work (general story)
6	Due by 7/13/12 . Send xls to VVV	Kim/Bryant	Request/receive KHA patient origin data to document service area. Send for IP/OP reports pdfs - Years FFY 2011, 2010 and 2009 PO101E, PO202E, PO103zip, OP TOT223E.
7	Friday July 27 Noon	VVV / Harper (3)	Prepare/send out PR story to local media announcing upcoming Town Hall. VVV will mock-up Harper reps will send out to media sources.
8	Friday July 27 (at least 2 weeks prior to meeting)	Harper (3)	Prepare/send out Community TOWN HALL invite. (Use Harper HLTH Dept Required data file - joint signature (3). Use VVV letter sample format.)
9	WED August 8th Time TBD afternoon	VVV / Harper (3)	Conduct CHNA conference call #2. Review Req Names Excel file. Review Town Hall Secondary Research data (10 TABS) for Harper.
11	Tuesday August 14	VVV	TRIP CHNA Town Hall. Dinner 5:30-7pm (@ Chaparral) Conduct Community Roundtables - Review Basic CHNA info RANK priorities.
12	On or before Sept 14	VVV	Complete Analysis - Release Draft 1- seek feedback from County Leaders (Hospital & Health Dept.)
14	On or before 10/15/12	VVV	Produce & Release final CHNA report. Post CHNA online.
16	After 10/15/12	VVV / Harper (3)	Hold Board Meetings discuss CHNA needs, adopt an implementation strategy and communicate YOUR plan.

May 9, 2012



Sherry Houston
Jonna Gaffney
Harper County Health Department

Thank you for applying for the 2012 Kansas Rural Community Health Assessment mini-grant opportunity to support rural communities in assessing their community health needs.

We are pleased to announce that your community will receive a grant award of \$3,000 to help support the collaborative efforts of your hospital and local health department in engaging your local partners and residents to conduct a community health assessment.

Your mini-grant award will be distributed in two payments from the Kansas Rural Health Options Project, managed by the Kansas Hospital Association/Kansas Hospital Research and Service Foundation. The first payment of \$1,500 should be received shortly in the mail with the second payment of \$1,500 to be mailed upon your submission of the mid-way progress report in June 2012.

Grantees will be required to submit two progress reports; one midway through the grant period and a final report. These reports will be brief and will reflect progress toward grant goals to include meeting notes, attendance, activities and expenses to date.

Please Note Again: Given this project seeks to help grow local capacity, no more than 60% of your total grant award may be used to purchase facilitator or community survey services from sources outside the local community. Funds cannot be used to supplant other dollars.

In the near future, you will be contacted by the Office of Rural Health Program within the Bureau of Community Health Systems to provide you additional information regarding these progress reports and other technical assistance available from the Bureau and other partners within the Kansas Partnership for Improving Community Health.

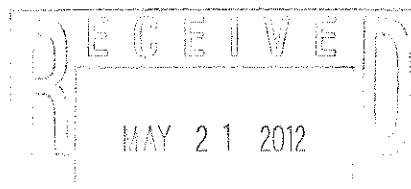
Please don't hesitate to contact Sara Roberts (sroberts@kdheks.gov) with any questions.

Thanks and congrats!

Sincerely,

Sara Roberts
Office of Rural Health Program
Bureau of Community Health Systems, KDHE

Cindy Samuelson
Kansas Rural Hospital Options Project
Kansas Hospital Association



To meet IRS aligned CHNA requirements, a *four-phase methodology* was reviewed and approved as follows:

Phase I – Discovery: Conduct a 30 minute conference call with each CHNA hospital client and County Health Department. Review and confirm CHNA calendar of events. Explain and coach client to complete required participant database. In addition, schedule and organize 2-3 two day work trips to NW KS to conduct primary research recorded in Phase II activities.

Phase II – QUALIFY Community Need:

A) Conduct in depth secondary research to uncover the following historical community health status. Use KS Health Matters, a joint venture between KHA and KHDE, Vital Statistics, County Health Rankings, etc. to document “current state” of county health organized as follows:



TAB 1. Demographic Profile
TAB 2. Economic/Business Profile
TAB 3. Educational Profile
TAB 4. Maternal and Infant Health Profile
TAB 5. Hospitalization / Providers Profile
TAB 6. Behavioral Health Profile
TAB 7. Risk Indicators & Factors
TAB 8. Uninsured Profile
TAB 9. Mortality Profile
TAB 10. Preventative Quality Measures

B) Conduct primary research (if so elected) to uncover public health needs, practices and perceptions for hospital primary service areas. Both mail/online surveys are recommended with a survey response of 250 household or more.

Phase III – QUANTIFY Community Need: Conduct 90 minute Town Hall meeting at each county location. Each meeting reviews the CHNA secondary data, facilitated group discussion, and conducted a group ranking activity to determine the most important community health needs.

Phase IV - Complete data analysis & create comprehensive Community Health Needs Assessment. Post CHNA report findings to meet IRS CHNA criteria.

After consideration of Anderson County CHNA stakeholders, the sponsoring hospital in collaboration with local Health Department chose the CHNA Basic plus option with the following project schedule:

Phase I: Discovery.....	June 2012
Phase II: Secondary Research	June - July 2012
Phase III: Town Hall Meeting.....	August 14, 2012
Phase IV: Prepare / Release CHNA report.....	October, 2012

Detail CHNA research & development steps are as follows;

	Suggested Development Steps
Step # 1 Commitment	<i>Determine interest level of area healthcare leaders (Hospital, Health Dept, Schools, Churches, Physicians etc), hold community meeting.</i>
Step # 2 Planning	<i>Prepare brief Community Health Needs Assessment Plan</i> - list goals, objectives, purpose, outcome, roles, community involvement, etc. Hold Community Kick-off meeting.
Step # 3 Secondary Research	<i>Collect & Report Community Health Published Facts. Gather data health practice data from</i> published secondary research sources i.e. census, county health records, behavioral risk factors surveillance, etc.
Step # 4a Primary Research	<i>Conduct Community Roundtable (Qualitative Research). Review Secondary Research (Step3) with Community Stakeholders.</i> Gather current opinions and identify health needs.
Step # 4b Primary Research <Optional>	<i>Collect Community Opinions. (Quantitative Research).</i> Gather current opinions (Valid sample size) regarding community health needs and healthcare practices. If appropriate, conduct Physician Manpower Assessment to determine FTE Physician need by specialty.
Steps # 5 Reporting	<i>Prepare/Present comprehensive Community Health Needs Assessment report (to community leaders) with Recommended Actions to improve health.</i> < Note: Formal report will follow IRS Notice 2011-52 regs >
	VVV Research & Development INC 913 302-7264

Overview of Town Hall Community Priority Setting Process

Each community has a wealth of expertise to be tapped to conduct the CHNA. For this purpose, Town halls are the perfect forum to gather community insight. Town Hall sessions were organized to provide an objective consensus building method of reviewing and prioritizing county health issues. All Town Hall priority-setting and scoring processes involved the input of key stakeholders in attendance.

The individuals and organizations comprising the Town Halls were critically important to the success of the CHNA. The following list outlines partners invited to Town Hall: local hospital, public health community, mental health community, free clinics, community-based clinics, service providers, local residents, community leaders, opinion leaders, school leaders, business leaders, local government, faith-based organizations and persons (or organizations serving them), people with chronic conditions, uninsured community members, low income residents, and minority groups.

Harper County's Town Hall was held over dinner on Tuesday August 14th, 2012 at the Chaparral High School Cafeteria. Vince Vandelaar and Lyndsey Ogle facilitated this 1 ½ hour session with seventy three (73) community attendees. (Note detail roster of Town Hall attendees is listed in Section V a.)

The following agenda was followed:

1. Welcome & Introductions
2. Purpose for the CHNA Town Hall and roles in the process
3. Presentation / Review of historical County Health Indicators (10 TABS)
4. Facilitate Town Hall discussion of data (probe health strengths / concerns). Reflect on size and seriousness of any health concerns sited and discuss current community health strengths.
5. Identify and rank top community health concerns. Encourage all Town Hall participants to vote (using 4 dots to cast votes) on priority issues.
6. Close meeting by reflecting on the health needs / community voting results.

(Note: At the end of each Town Hall session, WV encouraged all community members to continue to contribute ideas to both hospital and health department leaders.)

To review Town Hall discussion content, Section V has detail notes of session plus activity card content shared.

Community Health Needs Assessment Harper County KS Town Hall Meeting

Vince Vandehaar, MBA
VVV Research & Development INC.
Owner and Adjunct Marketing Professor

Olathe, Kansas 66061
vmlvandehaar@aol.com

<http://sites.google.com/site/vvvresearchdevelopment/>
Blackberry: 913-302-7264

Community Health Needs Assessment (CHNA) Town Hall Discussion Agenda

- I. Opening / Introductions (10 mins)
- II. Review CHNA Purpose & Process (10 mins)
- III. Review Current County "Health Status" –
Secondary Data by 10 TAB Categories (35 mins)
- IV. Collect Community Health Perspectives Hold
Community Voting Activity: Determine MOST Important Health
areas. (30 mins)
- V. Close / Next Steps (5 mins)

VVV Marketing & Development INC. Oct 2011

I. Introduction:

Background and Experience



Vince Vandehaar MBA, VVV Marketing & Development INC
Principal Consultant, Olathe, KS 913 302-7264

➤ – Professional Consulting Services: Strategic Planning, Marketing
Management, Business Research & Development Focus : Strategy ,
Research , Deployment

➤ – Over 25 years of experience with Tillinghast, BCBSKC, Saint Luke's

Adjunct Professor - Marketing / Health Admin.- 24 years +

➤ Webster University (1988 – present)
➤ Rockhurst University (2010 – present)

□ Lyndsey Ogle MA, Business Development Analyst

Town Hall Participation (You)

- ALL attendees welcome to share.
 - Parking Lot
- There are no right or wrong answers.
- Only one person speaks at a time.
- Please give truthful responses.
- Have a little fun along the way.

I. Introductions: a conversation with the community.

Community members and organizations invited to CHNA Town Hall

Consumers: Uninsured/underinsured people, Members of at-risk populations, Parents, caregivers and other consumers of health care in the community, and Consumer advocates.

Community leaders and groups: The hospital organization's board members, Local clergy and congregational leaders, Presidents or chairs of civic or service clubs - Chamber of Commerce, veterans' organizations, Lions, Rotary, etc., Representatives from businesses - owners/CEO's of large businesses (local or large corporations with local branches), Business people & merchants (e.g., who sell tobacco, alcohol, or other drugs), Representatives from organized labor, Political, appointed and elected officials, Foundations, United Way organizations. And other "community leaders."

Public and other organizations: Public health officials, Directors or staff of health and human service organizations, City/Community planners and development officials, Individuals with business and economic development experience, Welfare and social service agency staff, Housing advocates - administrators of housing programs: homeless shelters, low-income-family housing and senior housing, Education officials and staff - school superintendents, principals and teachers, Public safety officials, Staff from state and area agencies on aging, Law enforcement agencies - Chiefs of police, Local colleges and universities, Coalitions working on health or other issues.

Other providers: Physicians, Leaders in other not-for-profit health care organizations, such as hospitals, clinics, nursing homes and home-based and community-based services, Leaders from Catholic Charities and other faith-based service providers, Mental health providers, Oral health providers, Health insurers, Parish and congregational nursing programs, Other health professionals

II. Purpose: Why conduct Community Health Needs Assessment?

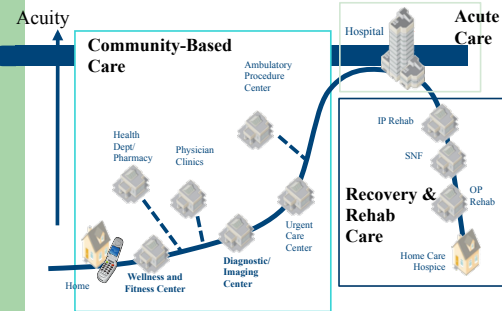
- To determine health-related trends and issues of the community.
- To understand/evaluate health delivery programs in place.
- To develop strategies to address unmet health needs.
- To meet Federal requirements - both local hospital & Health Department.

II. Review CHNA Definition

A Community Health Needs Assessment (CHNA) is a systematic collection, assembly, analysis, and dissemination of information about the health of the community. *<NOTE: Some the data has already been collected (published) by local, state and federal public health organizations. Some data will be collected today.>*

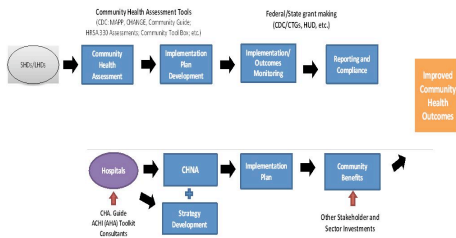
CHNA's role is to identify factors that affect the health of a population and determine the availability of resources to adequately address those factors.

Future System of CARE Sg2



IP = inpatient; SNF = skilled nursing facility; OP = outpatient.

Community Health Needs Assessment Joint Process: Hospital & Health Department



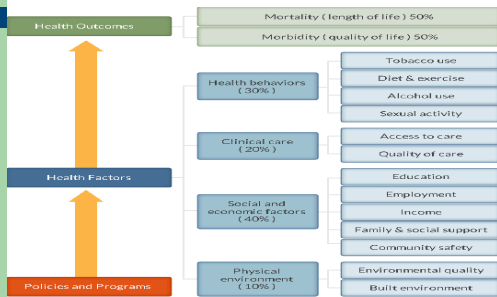
II. Required Written Report IRS 990 Documentation

- a description of the community served
- a description of the CHNA process
- the identity of any and all organizations & third parties which collaborated to assist with the CHNA;
- a description of how the organization considered the input of persons representing the community (e.g., *through meetings, focus groups, interviews, etc.*), who those persons are, and their qualifications;
- a prioritized description of all of the community needs identified by the CHNA and
- a description of the existing health care facilities and other resources within the community available to meet the needs identified through the CHNA.

III. Review Current County "Health Status" – Secondary Data by 10 TAB Categories plus KS State Rankings

TAB 1. Demographic Profile
TAB 2. Economic/Business Profile
TAB 3. Educational Profile
TAB 4. Maternal and Infant Health Profile
TAB 5. Hospitalization / Providers Profile
TAB 6. Behavioral Health Profile
TAB 7. Risk Indicators & Factors
TAB 8. Uninsured Profile
TAB 9. Mortality Profile
TAB 10. Preventative Quality Measures

County Health Rankings from The Robert Wood Johnson Foundation & University of WI Health Institute



IV. Collect Community Health Perspectives Ask your opinion. Your thoughts?

- 1) **Today:** What are the *strengths* of our community that contribute to health
- 2) **Today:** Are there healthcare services in your community / neighborhood that you *feel need to be improved and / or changed?*
- 3) **Tomorrow:** What is occurring or might occur *that affects the health of our community?*

V. Have we forgot anything?

- | | |
|--------------------------------|------------------------------------|
| A. Aging Services | M. Hospice |
| B. Chronic Pain Management | N. Hospital Services |
| C. Dental Care/Oral Health | O. Maternal, Infant & Child Health |
| D. Developmental Disabilities | P. Nutrition |
| E. Domestic Violence, | R. Pharmacy Services |
| F. Early Detection & Screening | S. Primary Health Care |
| G. Environmental Health | T. Public Health |
| H. Exercise | U. School Health |
| I. Family Planning | V. Social Services |
| L. Food Safety | W. Specialty Medical Care Clinics |
| J. Health Care Coverage | X. Substance Abuse |
| K. Health Education | Y. Transportation |
| L. Home Health | Z. Other _____ |

Community Health Needs Assessment

Questions Next Steps ?

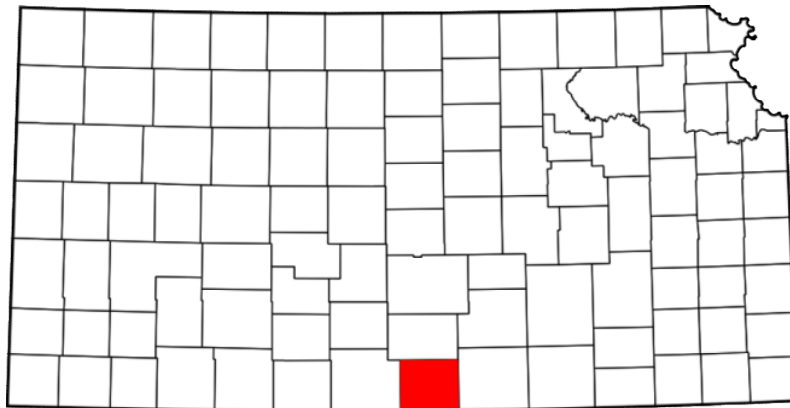
VVV Research & Development INC.
vmivandehaar@aol.com
913 302-7264

II Methodology

d) Community Profile (Demographic/Economics)

A description of community served

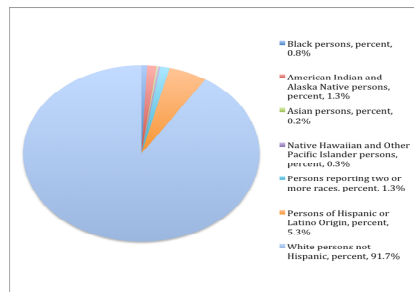
Harper County Community Profile



Demographics

The population of Harper County was estimated to be 5,993 in 2011, and had a -0.7% change in population from 2010–2011.¹ The county covers 801.27 square miles and this area includes Harper Municipal Airport Historical Museum of Anthony Public Library's of Anthony, Attica and Harper, Public School Systems USD 361 Anthony-Harper and USD 511, and Newspapers Anthony Republican, Attica Independent, Harper Advocate, Harper County Herald.² The county has an overall population density of 7.5 persons per square mile, compared to the State average of 34.9 persons per square mile. The county is located in south central Kansas and its economy is based on educational, health and social services (22.1%), manufacturing (17.2%), agriculture, forestry, fishing and hunting, and mining (12.9%).³ The county was founded in 1873 and the county seat is Anthony.⁴

Population by Race 2011



¹ <http://quickfacts.census.gov/qfd/states/20/20149.html>

² <http://skyways.lib.ks.us/counties/PT>

³ <http://www.city-data.com>

⁴ <http://skyways.lib.ks.us/counties/PT>

The major highway transportation access to Harper County is US Highway 160, which runs east west across the county; Kansas Highway 2, which runs northeast from central eastern Harper County; and Kansas Highway 14 which runs north-south on the county's western most edge.

Homeownership in Harper County (70.7%) is just slightly better than the state average (69.4%). Median price of an owner-occupied home in Harper County is \$ \$61,400 less than half the state median value of \$122,600.

Employment in Harper County resulted in a median household income of \$38,168 from 2006-2010 versus the state median household income of \$49,424.⁵ As of May 2011 the average unemployment rate in Harper was 4.7% just slightly lower than the state rate of 5.0%⁶

⁵ <http://www.bls.gov/ro7/qcewks.pdf>

⁶ <http://unemployment-rates-county.findthedata.org//87829/Harper-County-KS>

Detail Demographic Profile Harper County KS										
SA	ZIP	NAME	County	Population:			Households		Avg Size	Per Capita Income 11
				Yr2011	Yr2016	Chg	Yr2011	Yr2016		
	67003	ANTHONY	HARPER	2562	2489	-2.8%	1103	1069	2.26	\$18,959
	67009	ATTICA	HARPER	946	935	-1.2%	372	364	2.42	\$19,600
	67018	BLUFF CITY	HARPER	173	159	-8.1%	78	71	2.22	\$20,420
	67036	DANVILLE	HARPER	138	126	-8.7%	59	54	2.34	\$23,363
	67049	FREEPORT	HARPER	44	40	-9.1%	17	16	2.59	\$21,571
	67058	HARPER	HARPER	1956	1839	-6.0%	819	769	2.37	\$20,844
	67150	WALDRON	HARPER	98	90	-8.2%	50	46	1.96	\$22,835
Totals Primary Service Area zips				5,917	5,678	-4.0%	2,498	2,389	2.3	\$21,085

SA	ZIP	NAME	County	Population 2011:			GenX	MALES	FEMALES	Females Age20_35
				Yr2011	POP65p	%				
	67003	ANTHONY	HARPER	2562	580	22.6%	547	1237	1325	255
	67009	ATTICA	HARPER	946	233	24.6%	192	470	476	88
	67018	BLUFF CITY	HARPER	173	42	24.3%	28	89	84	11
	67036	DANVILLE	HARPER	138	26	18.8%	25	70	68	10
	67049	FREEPORT	HARPER	44	9	20.5%	9	20	24	4
	67058	HARPER	HARPER	1956	384	19.6%	425	992	964	185
	67150	WALDRON	HARPER	98	26	26.5%	16	50	48	6
Totals Primary Service Area zips				5,917	1,300	22.0%	1,242	2,928	2,989	559

SA	ZIP	NAME	County	Population 2011:			Amer IN	Average HH Inc11	Hholds Yr2011	# \$50K+ Income
				White	Black	Hisp				
	67003	ANTHONY	HARPER	2416	12	95	35	\$43,536	1103	349
	67009	ATTICA	HARPER	911	5	33	10	\$48,791	372	131
	67018	BLUFF CITY	HARPER	167	0	4	1	\$45,291	78	24
	67036	DANVILLE	HARPER	134	0	3	1	\$54,646	59	27
	67049	FREEPORT	HARPER	43	0	1	0	\$55,831	17	8
	67058	HARPER	HARPER	1830	4	159	21	\$49,594	819	308
	67150	WALDRON	HARPER	94	0	2	1	\$44,756	50	16
Totals Primary Service Area zips				5,595	21	297	69	342,445	2,498	863

Source: ERSA Demographics

III. Community Health Status

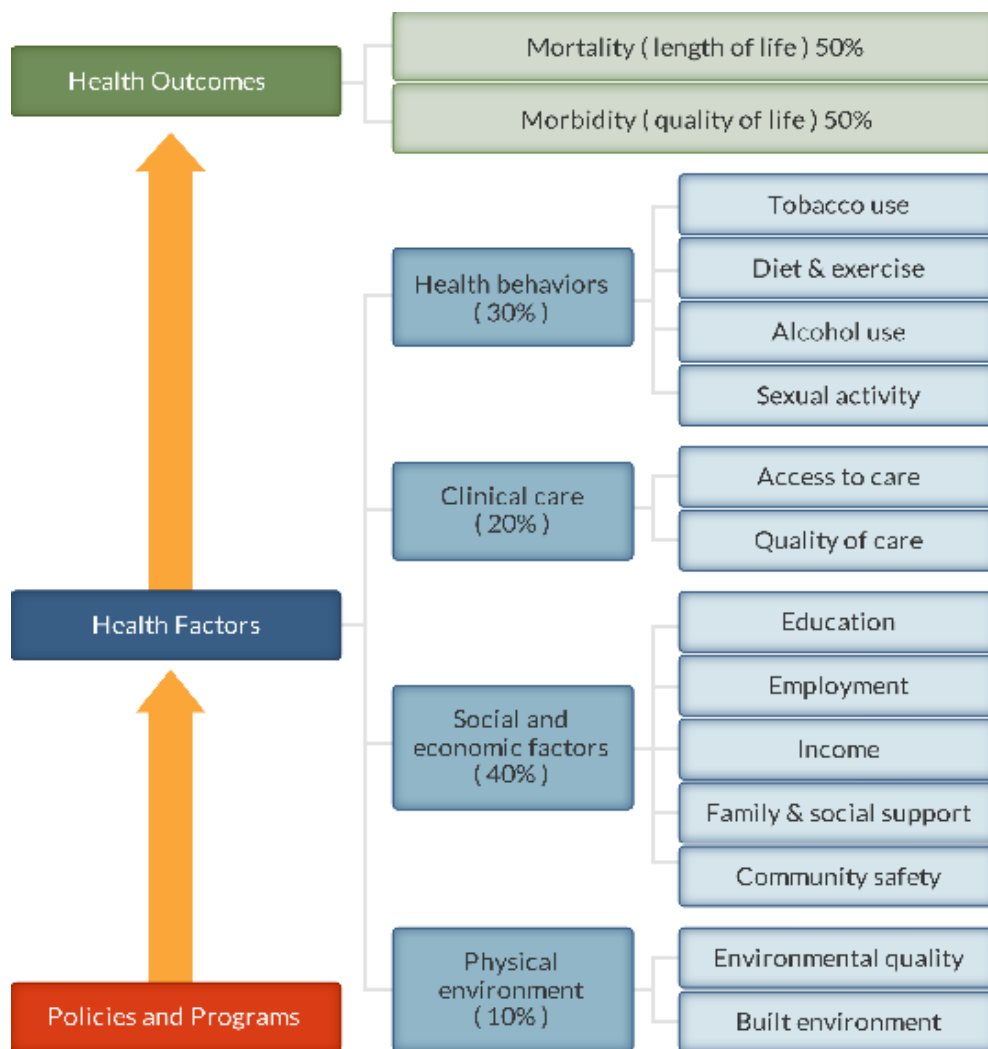
[VVV Research & Development INC]

II. Community Health Status

a. Historical Health Statistics

Health Status Profile – Harper County KS

This section of the CHNA reviews published quantitative community health indicators and results of our recent CHNA Town Hall. To produce this profile, VVV Research & Development staff analyzed data from multiple sources. This analysis focuses on a set of published health indicators organized by ten areas of focus (10 TABS), results from the 2012 County Health Rankings and conversations from Town Hall primary research. (Note: The Robert Wood Johnson Foundation collaborates with the University of Wisconsin Population Health Institute to release annual *County Health Rankings*. As seen below in model, these rankings are based on a number of health factors.)



County Health Rankings model ©2012 UWPHI

The County Health

2012 State Health Rankings

2012 County Health Rankings RWJ					
#	KS Rank of 105 counties	Definitions	Harper County KS	Trend	CAH KS 11
1	Physical Environment	Environmental quality	52		59
2	Health Factors		80		44
2a	Clinical Care	Access to care / Quality of Care	88		60
2b	Social & Economic Factors	Education, Employment, Income, Family/Social support, Community Safety	74		40
3	Health Outcomes		63		45
3a	Health Behaviors	Tobacco Use, Diet/Exercise, Alcohol Use, Sexual Activitiy	52		45
3b	Morbidity	Quality of life	28		43
3c	Mortality	Length of life	84		42
http://www.countyhealthrankings.org					

One of the IRS CHNA requirements is to understand community health strengths. Below is a table documenting Town Hall healthcare areas of strength relating to availability, access, and/or quality.

Harper County KS - Health Delivery Strengths

- Senior Citizen Meals
- Access to Cardiology/Orthopedics/Urology providers
- Harper Community Foundation has money available for grants
 - Two Pharmacies
 - Quality Health Care Providers
 - Good Family Support (for seniors)
 - Good Senior / Hospital Facilities
 - Good Physical Therapy
 - Good HC public transportation
 - Great Imaging Services
 - Stroke-ready classification
 - Fire Department / 24 hour Paramedic
 - Dentists / Eye Doctors
 - Food Program for Kids (Summer)
 - Good Quality of Life
 - Access to Wellness/Fitness Facilities
 - Several long-term care choices
 - Quality Health Department services

Secondary Research

When considering the state of community health, it's important to review published health data by topic area. Below is a summary of key TABS of information collected:

Tab 1 & 2 Demographics/Economics

#	Population History Vital Statistics	% Change 2006-2010	YR 2006	YR 2009	YR 2010	YR 2011
	Harper County Population	1.4%	5952	5667	6034	5917

#	People QuickFacts	Harper Co.	Trend	State of KS	CAHKS 11
1	Population, 2010	6,034		2,853,118	6,710
2	Population, percent change, 2000 to 2010	-7.70%		6.10%	-5.8%
3	Population, 2000	6,536		2,688,418	6,682
4	Persons under 5 years, percent, 2010	6.70%		7.20%	5.9%
5	Persons under 18 years, percent, 2010	23.70%		25.50%	22.7%
6	Persons 65 years and over, percent, 2010	21.70%		13.20%	19.8%
7	Female, percent, 2010	50.5%		50.40%	49.2%

Detail Demographic Profile Harper County KS										
SA	ZIP	NAME	County	Population 2011:				MALES	FEMALES	Females Age20_35
				Yr2011	POP65p	%	GenX			
	67003	ANTHONY	HARPER	2562	580	22.6%	547	1237	1325	255
	67009	ATTICA	HARPER	946	233	24.6%	192	470	476	88
	67018	BLUFF CITY	HARPER	173	42	24.3%	28	89	84	11
	67036	DANVILLE	HARPER	138	26	18.8%	25	70	68	10
	67049	FREEPORT	HARPER	44	9	20.5%	9	20	24	4
	67058	HARPER	HARPER	1956	384	19.6%	425	992	964	185
	67150	WALDRON	HARPER	98	26	26.5%	16	50	48	6
Totals Primary Service Area zips				5,917	1,300	22.0%	1,242	2,928	2,989	559

#	People QuickFacts	Harper Co.	Trend	State of KS	CAHKS 11
1	Households, 2005-2009	2,674		1,093,694	2,587
2	Persons per household, 2005-2009	2.11		2.46	2.2
3	Per capita money income in past 12 months (2009 dollars)	\$21,992		\$25,522	\$20,959
4	Median household income, 2009	\$38,022		\$47,709	\$41,516
5	People Living Below Poverty Level (%)	12.2		12.4	10.4
6	People Living 200% Above Poverty Level (%)	60		68.8	65.2
7	People 65+ Living Below Poverty Level (%)	7.9		8.1	6.6
8	People 65+ Living Alone (%)	24.8		30.1	27.4

Source U.S. Census Bureau: State and County QuickFacts. Data derived from Population Estimates, American Community Survey, Census of Population and Housing, Small Area Income and Poverty Estimates, State and County Housing Unit Estimates, County Business Patterns, Nonemployer Statistics, Economic Census, Survey of Business Owners, Building Permits, Consolidated Federal Funds Report

	http://www.countyhealthrankings.org	Harper Co	Trend	State of KS	CAHKS 11
1	Children in poverty	18%		18%	17%
3	Unemployment	5.30%		7.00%	5.0%
#	HealthMatters.com Categories	Harper Co	Trend	State of KS	CAHKS 11
1	Per Capita Income (\$)	\$22,467		\$25,522	\$21,038
2	Median Household Income (\$)	\$38,168		\$48,394	\$40,006
3	Average Monthly WIC Caseload (per 1,000)	35.1		29.1	25.6
4	Liquor Store Density (per 1,000)	35.3		22	36.0
5	Grocery Store Density ((per 1,000)	0.53			0.52
6	Fast Food Restaurant Density (per 1,000)	1.21			1.00
8	Low-Income and >1 Mile from Grocery Store	19.2			19.5
9	Households without a Vehicle (%)	3.8		5.2	3.9
#	Business QuickFacts www.healthmatters.com	Harper Co	Trend	State of KS	CAHKS 11
1	Total number of firms, 2007	929		237,040	882
2	Households with Public Assistance (%)	2.5		2.3	2.2
3	Homeownership (%)	59.5		62.6	57.8
4	Foreclosure Rate (%)	6.4		3.5	4.0

Tab 3 Public Schools Health Delivery Profile. Currently school districts are providing on site primary health screenings and basic care.

#	Indicators	Harper Co			
1	Total # Public School Nurses	1			
2	School Nurse is part of the IEP team	yes			
3	School Wellness Plan (Active)	yes			
4	VISION: # Screened / Referred to Prof / Seen by Professional	855/235/147			
5	HEARING: # Screened / Referred to Prof / Seen by Professional	855/23/9			
6	ORAL HEALTH: # Screened / Referred to Prof / Seen by Professional	70/?/?			
7	SCOLIOSIS: # Screened / Referred to Prof / Seen by Professional	246/?/?			
8	# of Students served with no identified chronic health concerns	855			
9	School has a suicide prevention program	yes			
10	Compliance on required vaccinations (%)	96%			
#	Healthmatters.com Categories	Harper Co	Trend	KS	CAHKS 11
1	Student-to-Teacher Ratio (% Student / Teacher)	11.5		13.7	11.3
2	Students Eligible for the Free Lunch Program (%)	39.1			27.7
3	Poverty Status by School Enrollment (%)	13.4			8.0

TAB 4 Maternal and Infant Health Profile. Tracking maternal & infant care patterns are vital in understanding the foundation of family health.

	Indicator http://www.countyhealthrankings.org	Harper Co	Trend	State of KS	CAHKS 11
1	Low birthweight	7.30%		7.20%	7.7%
#	Vital Statistics: Maternal and Infant Health Profile, 2010	Harper Co	Trend	State of KS	CAHKS 11
1	Total Live Births, 2006	84		40,896	
2	Total Live Births, 2007	73		41,951	
3	Total Live Births, 2008	74		41,815	
4	Total Live Births, 2009	84		41,388	
5	Total Live Births, 2010	72		40,439	
6	Total Live Births, 2006-2010 - Five year Rate (%)	13.2%		14.70%	10.6%
7	Percent Premature (<37 weeks)	9.7%		8.8%	7.4%
8	Percentage of Mothers Who Initiate Breastfeeding	73.6%		77.2%	73.7%
#	HealthMatters.com Categories	Harper Co	Trend	State of KS	CAHKS 11
1	Number of Births per 1,000 Population (per 1000 pop)	13.1		14.6	11.9
2	Births Occurring to Teens per 1,000 Population (per 1000)	13.5		10.1	9.4
3	Percent of WIC Mothers Breastfeeding Exclusively (%)	35.1		29.1	17.4
4	Percent of Births with Low Birth Weight (%)	7.8		7.2	8.0
5	Percent of Births with Inadequate Birth Spacing (%)	19.6		12.4	13.9
6	% of Births Where Prenatal Care began in First Trimester	58.7		74.1	74.8

TAB 5 Hospitalization/Provider Profile Understanding provider access and disease patterns are fundamental in healthcare delivery. Listed below are several vital county statistics.

	http://www.countyhealthrankings.org	Harper Co	Trend	KS	CAHKS 11
1	Preventable hospital stays	116		70	115
2	Primary care physicians per 1	1443		857	1,202
#	HealthMatters.com Categories	Harper Co	Trend	State of KS	CAHKS 11
1	Injury Hospital Admission Rate (per 100,000)	1127.57		546.3	941.4
2	Heart Disease Hospital Admission Rate (per 100,000 Pop)	368.72		625.6	386.3
3	Congestive Heart Failure Hospital Admission Rate (per 100,000 Pop)	281.38		308.1	291.7
4	Chronic Obstructive Pulmonary Disease (COPD) Hospital Admission Rate (per 100,00)	298.54		189.3	272.2
5	Bacterial Pneumonia Hospital Admission Rate (per 100,000)	898.21		372.2	695.1

TAB 5 Hospitalization/Provider Profile (Continue)

#	KS Hospital Assoc PO103	Harper County (Total)			
		FFY2009	FFY2010	FFY2011	Trend
1	Total Discharges	897	910	810	
2	Total IP Discharges-Age 0-17 Pediatric	33	27	33	
3	Total IP Discharges-Age 18-44	62	81	67	
4	Total IP Discharges-Age 45-64	167	166	152	
5	Total IP Discharges-Age 65-74	128	120	112	
6	Total IP Discharges-Age 75+	333	344	289	
7	Psychiatric	21	27	23	
8	Obstetric	78	75	70	
9	Newborn	75	70	64	
10	Surgical %	20.3%	22.0%	19.9%	
#	Kansas Hospital Assoc PO101	Anthony Medical Center(Only)			
		FFY2009	FFY2010	FFY2011	Trend
	Total Discharges	178	206	191	
#	Kansas Hospital Assoc PO101	Harper Hospital Dist #5 (only)			
		FFY2009	FFY2010	FFY2011	Trend
	Total Discharges	297	260	222	

TAB 6 Social & Rehab Services Profile. Behavioral health and rehabilitation care provide another important indicator of community health status. Below is a summary of the previous 3 years assistance:

	Harper County KS						Trend
Source: Kansas Dept of	Persons Served			Annual Service Dollars			
Social & Rehab Services	FY 09	FY 10	FY 11	FY 2009	FY 2010	FY 2011	
Substance Abuse (PIHP)	8	8	7	\$11,944	\$4,394	\$18,492	
Mental Health (PAHP)	111	113	109	\$262,239	\$229,982	\$255,430	
Home and Community Based Serv							
Physical Disability	20	21	18	\$214,265	\$215,488	\$156,420	
Developmental Disability	8	130	8	\$113,875	\$105,318	\$80,257	
Major Services (Average per MM)							
Temporary Assistance for Families	36	31	23	\$46,033	\$44,474	\$34,543	
TANF Employment Services	9	8	7	\$4,255	\$2,769	\$1,565	
Child Care Assistance	41	45	23	\$120,076	\$136,253	\$57,837	
Food Assistance	412	482	495	\$443,201	\$598,912	\$651,755	

TAB 7 Health Risk Profiles. Knowing community health risk factors and disease patterns can aid in the understanding “next steps” to improve health. Being overweight/obese; smoking, drinking in excess, not exercising etc can lead to poor health.

	http://www.countyhealthrankings.org	Harper Co	Trend	KS	CAHKS 11
1	Adult obesity	28.0%		30.0%	31.5%
2	Adult smoking	20.0%		18.0%	17.9%
3	Excessive drinking	10.0%		15.0%	11.6%
4	Inadequate social support	23.0%		16.0%	15.3%
5	Physical inactivity	34.0%		24.0%	28.0%
6	Poor mental health days	1.5		2.8	2.6
7	Poor physical health days	3.0		3.0	2.7
#	HealthMatters.com Categories	Harper Co	Trend	KS	CAHKS 11
1	Increased Lead Risk in Housing Rate	55.3%			45.7%

TAB 8 Uninsured Profiles. Based on synthetic estimations, the number of insured is documented below. Also, the amount of charity care (last 3 years of free care) from area providers is trended below.

	http://www.countyhealthrankings.org	Harper Co	Trend	State of KS	CAHKS 11
1	Uninsured	18%		15%	17%
#	Bad Debt.. Insurance Cant' Pay	YR09	YR10	YR11	
1	Harper Hospital District #5	\$365,290	\$525,458	\$357,903	
2	Anthony Medical Center	\$533,615	\$492,159	\$587,030	
#	Charity Care .. Free Care given	YR09	YR10	YR11	
1	Harper Hospital District #5	\$19,604	\$67,770	\$67,825	
2	Anthony Medical Center	\$37,137	\$85,461	\$30,952	

TAB 9 Mortality Profile. The leading causes of county deaths are listed below. Areas of higher than expected are so noted.

#	Causes of Death by County of Residence, KS 2010			
	Selected Causes of Death (ICD-10)	Harper Co	Trend	State of KS
	TOTAL	183		42,695
1	Major Cardio-vascular Disease	41		7,504
2	Disease of Heart	27		5,404
3	All Other Causes	17		3,961
4	All Malignant Neoplasms	14		5,359
5	Ischemic Heart Disease	13		3,169
6	Other Heart Diseases	13		2,070
7	Cerebrovascular Diseases	10		1,367
8	Chronic Lower Respiratory Diseases	8		1,581
9	Diabetes	7		655
10	Malignant Neoplasms of Digestive Organs	7		1,290
11	Other Malignant Neoplasms	4		1,138
12	Motor Vehicle	3		470
13	Pneumonia and Influenza	3		552
14	Primary Hypertension/ Hypertensive Renal Disease & Secondary Hypertension	3		161

TAB 10 Preventive Health Profile. The following table reflects future health of county. This information also is an indicator of community awareness of preventative measures.

	http://www.countyhealthrankings.org	Harper Co	Trend	KS	CAHKS 11
1	Diabetic screening	82%		85%	82%
2	Limited access to healthy foods	7%		7%	10%
3	Mammography screening	52%		67%	62%
4	Poor or fair health (Self Assess)	11%		13%	11%
#	HealthMatters.com Categories	Harper Co	Trend	State of KS	CAHKS 11
1	Percent of Infants Fully Immunized at 24 Months	75.4%		71.8%	81.6%
2	Percentage of Adults 18 + who received a Kstate Flu shot during the past 12 months	32.9		41.9	36.2
	Annual check-up visit to Dentist (past year)	NA		NA	NA
	Annual check-up visit to Eye Doctor (past year)	NA		NA	NA

IV. Inventory of Community Health Resources

[VVV Research & Development INC]

Inventory of Health Services 2012 - Harper County KS				
Cat	HC Services Offered in county: Yes / No	Hospital	HLTH Dept	Other
Clinic	Primary Care	Yes	No	
Hosp	Alzheimer Center	No	No	Yes
Hosp	Ambulatory Surgery Centers	Yes	No	
Hosp	Arthritis Treatment Center	No	No	
Hosp	Bariatric/weight control services	Yes	No	
Hosp	Birthing/LDR/LDRP Room	No	No	
Hosp	Breast Cancer	Yes	No	
Hosp	Burn Care	No	No	
Hosp	Cardiac Rehabilitation	No	No	
Hosp	Cardiac Surgery	No	No	
Hosp	Cardiology services	Yes	No	
Hosp	Case Management (Horizons MHC, Arrowhead West, ILCs, AAA)	No	No	Yes
Hosp	Chaplaincy/pastoral care services (Hospice agencies)	Yes	No	Yes
Hosp	Chemotherapy	No	No	
Hosp	Colonoscopy	Yes	No	
Hosp	Crisis Prevention (Horizons MHC & Sexual Assault/DV)	No	No	Yes
Hosp	CTScanner	Yes	No	
Hosp	Diagnostic Radioisotope Facility		No	
Hosp	Diagnostic/Invasive Catheterization		No	
Hosp	Electron Beam Computed Tomography (EBCT)		No	
Hosp	Enrollment Assistance Services	Yes	Yes	
Hosp	Extracorporeal Shock Wave Lithotripter (ESWL)		No	
Hosp	Fertility Clinic	No	No	
Hosp	FullField Digital Mammography (FFDM)	No	No	
Hosp	Genetic Testing/Counseling	No	No	
Hosp	Geriatric Services	Yes	No	
Hosp	Heart	Yes	No	
Hosp	Hemodialysis		No	
Hosp	HIV/AIDSServices (Testing & Counseling)		Yes	
Hosp	Image-Guided Radiation Therapy (IGRT)	No	No	
Hosp	Inpatient Acute Care - Hospital services	Yes	No	
Hosp	Intensity-Modulated Radiation Therapy (IMRT) 161		No	
Hosp	Intensive Care Unit	No	No	
Hosp	Intermediate Care Unit	Yes	No	
Hosp	Interventional Cardiac Catheterization	No	No	
Hosp	Isolation room	Yes	No	
Hosp	Kidney		No	
Hosp	Liver		No	
Hosp	Lung		No	
Hosp	MagneticResonance Imaging (MRI)	Yes	No	
Hosp	Mammograms	No	No	
Hosp	Mobile Health Services		No	
Hosp	Multislice Spiral Computed Tomography (<64 slice CT)		No	
Hosp	Multislice Spiral Computed Tomography (<64+ slice CT)		No	
Hosp	Neonatal		No	
Hosp	Neurological services		No	
Hosp	Obstetrics		No	
Hosp	Occupational Health Services (Occupational Therapy/HHA)	Yes	Yes	
Hosp	Oncology Services		No	
Hosp	Orthopedic services		No	
Hosp	Outpatient Surgery	Yes	No	
Hosp	Pain Management (HHA & Hospice agencies)	Yes	Yes	Yes
Hosp	Palliative Care Program (Hospice agencies)	Yes	No	Yes
Hosp	Pediatric (Immunizations)	Yes	Yes	
Hosp	Physical Rehabilitation (Physical & Speech Therapy/HHA)	Yes	Yes	
Hosp	Positron Emission Tomography (PET)	No	No	
Hosp	Positron Emission Tomography/CT (PET/CT)	No	No	
Hosp	Psychiatric Services (Horizons MHC)	No	No	Yes
Hosp	Radiology, Diagnostic	Yes	No	

Inventory of Health Services 2012 - Harper County KS				
Cat	HC Services Offered in county: Yes / No	Hospital	HLTH Dept	Other
Hosp	Radiology, Therapeutic	Yes	No	
Hosp	Reproductive Health (Family Planning Program)		Yes	
Hosp	Robotic Surgery	No	No	
Hosp	Shaped Beam Radiation System 161		No	
Hosp	Single Photon Emission Computerized Tomography (SPECT)		No	
Hosp	Sleep Center	Yes	No	
Hosp	Social Work Services (Horizons MHC)	Yes	No	Yes
Hosp	Sports Medicine		No	
Hosp	Stereotactic Radiosurgery		No	
Hosp	Swing Bed Services	Yes	No	
Hosp	Transplant Services	No	No	
Hosp	Trauma Center		No	
Hosp	Ultrasound	Yes	No	
Hosp	Women's Health Services (Limited testing & support programs)	Yes	Yes	
Hosp	Wound Care (Home Health Services)	Yes	Yes	
SR	Adult Day Care Program	No		Yes
SR	Assisted Living	Yes		Yes
SR	Home Health Services	No	Yes	
SR	Hospice	Yes		Yes
SR	LongTerm Care	Yes	Yes	Yes
SR	Nursing Home Services	Yes		Yes
SR	Retirement Housing	No		Yes
SR	Skilled Nursing Care	Yes	Yes	
ER	Emergency Services	Yes		
ER	Urgent Care Center			
ER	Ambulance Services	No		Yes
SERV	Alcoholism-Drug Abuse (AA, Mirror Inc., Horizons MHC)			Yes
SERV	Blood Donor Center (Red Cross outreach)			Yes
SERV	Chiropractic Services	Yes		Yes
SERV	Complementary Medicine Services (Pharmacies, Vision, Hearing, Horizons MHC)	No		Yes
SERV	Dental Services	No		Yes
SERV	Fitness Center	Yes		Yes
SERV	Health Education Classes	Yes		Yes
SERV	Health Fair (Annual)	Yes		Yes
SERV	Health Information Center			
SERV	Health Screenings	Yes	Yes	Yes
SERV	Meals on Wheels	Yes		Yes
SERV	Nutrition Programs	Yes	Yes	Yes
SERV	Patient Education Center			
SERV	Support Groups (Alzheimers, grief, SADD)			Yes
SERV	Teen Outreach Services (Church youth groups, SADD)			Yes
SERV	Tobacco Treatment/Cessation Program (Quitline)			Yes
SERV	Transportation to Health Facilities	No		Yes
SERV	Wellness Program (Limited employer/Wellness Centers)	Yes		Yes

Provider Manpower - Harper County KS			
	Supply working in County		
# of FTE Providers working in county	FTE County Based	FTE Visting DRs *	PA/NP
Primary Care:			
Family Practice	4.2	0.0	8.0
Internal Medicine	0.0	0.0	0.0
Obstetrics/Gynecology	0.0	0.0	0.0
Pediatrics	0.0	0.0	0.0
Medicine Specialists:			
Allergy/Immunology	0.0	0.0	
Cardiology	0.0	0.0	
Dermatology	0.0	0.0	
Endocrinology	0.0	0.0	
Gastroenterology	0.0	0.0	
Oncology/RADO	0.0	0.0	
Infectious Diseases	0.0	0.0	
Nephrology	0.0	0.0	
Neurology	0.0	0.0	
Psychiatry	0.0	0.0	
Pulmonary	0.0	0.0	
Rheumatology	0.0	0.0	
Surgery Specialists:			
General Surgery	0.0	0.0	
Neurosurgery	0.0	0.0	
Ophthalmology	0.0	0.0	
Orthopedics	0.0	0.0	
Otolaryngology (ENT)	0.0	0.0	
Plastic/Reconstructive	0.0	0.0	
Thoracic/Cardiovascular/Vasc	0.0	0.0	
Urology	0.0	0.0	
Hospital Based:			
Anesthesia/Pain	0.0	0.0	
Emergency	0.0	0.0	0.0
Radiology	0.0	0.0	
Pathology	0.0	0.0	
Hospitalist *	0.0	0.0	
Neonatal/Perinatal	0.0	0.0	
Physical Medicine/Rehab	0.0	0.0	
VA clinic		0.0	
Podiatry		0.0	
Others			
Eye Care (OD)	1.0	0.0	
Dentists	4.0	0.0	
TOTALS	9.2	0.0	8.0

Visiting Specialists to Harper County KS		
<i>SPECIALTY - Physician, Group, City, ST</i>	<i>SCHEDULE</i>	<i>LOCATION OF OUTREACH CLINIC</i>
Chiropractor Karl May, DCP Clearwater, KS	Tuesdays and Thursdays	Harper Hosp Dist #5
Cardiology - Roger Bond, M.D. Wichita, KS	1st and 3rd Wed.	Harper Hosp Dist #5
Cardiology - Michael Lloyd, D.O. Wichita, KS	1st and 3rd Wed.	Anthony Medical Center
General Surgery Donald Ransom, M.D. Medicine Lodge, KS	Every Tuesday	Harper Hosp Dist #5
General Surgery Scott Porter M.D. Wichita, Ks	2-3 times monthly on Tues.	Anthony Medical Center
Gynecology Mid KS Womens Wichita, Ks	monthly on Mon?	Anthony Medical Center
Hematology Phu Truong M.D. Wichita, Ks	monthly on Thurs.	Anthony Medical Center
Oncology Phu Truong M.D. Wichita, Ks	monthly on Thurs.	Anthony Medical Center
Optometry Maydew Thibault Optometry LLC Pratt, KS	Mondays	Harper Hosp Dist #5
Orthopaedics Paul Pappademos, M.D. Wichita, Ks	3rd Fri	Anthony Medical Center
Urology Bibiano Ouano, M.D. Wichita, KS	4th Friday	Harper Hosp Dist #5
Urology- Richard Steinberger M.D. Wichita, KS	2nd Fri.	Anthony Medical Center

Harper County KS Area Health Services

Emergency Numbers

Police/Sheriff 911

Fire 911

Ambulance 911

Non-Emergency Numbers

Harper County Sheriff 842-5135

Harper County Ambulance 842-3506

Municipal Non-Emergency Numbers

	<u>Police/Sheriff</u>	<u>Fire</u>
Anthony	842-3134	842-5434
Attica	254-7291	254-7265
Harper	896-2853	896-2511

This community resource guide was put together by the Harper County Interagency Coordinating Council (ICC) members as a resource guide for services available in Harper County. The goals of the ICC are to enhance communication and sharing among community service agencies, identify community needs and agency roles and responsibilities, coordinate services between existing agency programs, and ensure a continuum of services through shared resources to benefit the residents of Harper County. The group meets every other month on Thursdays at noon, alternating between sites in Anthony and Harper.

If you are interested in attending and/or participating in the meetings please contact Joyce Kaup (620-842-3743) or Sherry Houston (620-842-5132) for current meeting information. We hope to continue to develop the directory over time and publish updates on at least a bi-annual basis. If you see errors or omissions in any of the information, please contact Sherry Houston at the Harper County Health Department/Harper County Home Health Agency (620-842-5132).

Community Resources

ABUSE/NEGLECT

Adult/Child Abuse Hotline (SRS)	1-800-922-5330
Adult Abuse in Facility Hotline (KDHE)	1-800-842-0078
Child Help USA/National Child Abuse Hotline	1-800-422-4453
Connecting Families	1-800-898-4903
Parents Helping Parents	1-800-332-6378
Parents Help Line.....	1-800-332-6378
Sexual Assault/Domestic Violence Center	1-800-701-3630
Saint Francis Community Services	620-326-6373
TFI Family Services.....	1-877-921-4114

ADVOCACY

Connecting Families	1-800-898-4903
Department On Aging & Disability Services Ombudsman	1-800-432-3535
Disability Rights Center of Kansas	1-800-432-2326
Kansas Guardianship Program.....	1-800-672-0086

ALCOHOL & DRUGS

Alcoholics Anonymous, Anthony.....	620-845-3943
Communities Mobilizing for Change on Alcohol Coordinator (Harper County).....	316-243-8962
Drug Abuse Hotline	1-800-662-4357
Horizons Mental Health Center	620-842-3768
Mirror, Inc.....	620-213-1352
National Clearinghouse for Alcohol & Drug Information.....	1-800-729-6686
Prevention of Underage Drinking Grant	316-243-8962
SADD	316-243-8962
South Central Kansas Regional Prevention Center	316-283-6743

CHILD CARE

Child Start (Listing of child care providers)	1-800-684-3962
Karen Knowles (Licensing of providers).....	620-221-1430
SRS (Financial assistance for child care).....	1-888-369-4777

Licensed Day Care Providers

Blessed Beginnings Preschool	620-842-3022
Bridges to Learning Preschool.....	620-896-7550
Bobbie's PlayPals Daycare	620-842-5460
Busy Blocks Child Care.....	620-896-7002
Carrie Bohnert.....	620-842-3635
First Steps Child Care	620-842-5221
Harper County Early Head Start	1-800-684-3962 or 620-842-3999

CHILD CARE (Continued)

Janell's Day Care	620-842-3677
KrackerJack Palace Child Care.....	620-896-7123
Lil' Feet Daycare	620-896-7654
Wee Angels Day Care.....	620-254-7501

CHURCHES**Anthony**

Anthony Christian Church	620-842-5541
Assembly of God Church.....	620-842-5318
Central Baptist Church.....	620-842-5414
Church of Christ.....	620-842-3200
Church of the Nazarene	620-842-3897
Congregational Church	620-842-5436
First Baptist Church	620-842-5395
First Pentecostal Church	620-842-3864
Grace Episcopal Church	620-842-3254
Life180 Church	No phone
Lighthouse of Prayer.....	No phone
St. Joan of Arc Parish.....	620-842-5537
Son Light Worship Center	620-842-2598
United Methodist Church.....	620-842-5486

Attica

Assembly of God Church.....	620-254-7654
Attica Christian Church	620-254-7944
Faith Baptist Church	620-254-7802
United Methodist Church.....	620-254-7911

Bluff City

United Methodist Church.....	620-455-3476
------------------------------	--------------

Burchfiel

Burchfiel United Methodist Church.....	620-455-3476
--	--------------

Crystal Springs

Crystal Springs Mennonite Church.....	620-896-2462
---------------------------------------	--------------

Freeport

Freeport Presbyterian Church	620-842-3572
------------------------------------	--------------

Harper

Calvary Baptist Church.....	620-896-2161
Chikaskia Baptist Church	620-896-2277

CHURCHES (Continued)

Harper

Church of Christ.....	620-896-2033
Community Bible Church.....	No phone
Cornerstone Baptist Church, 615 Central, Harper.....	No phone
Harper Christian Church.....	620-896-2461
Pleasant Valley Mennonite Church	620-896-2004
Presbyterian Church.....	620-896-2332
St. Joan of Arc Parish.....	620-896-7886
United Methodist Church.....	620-896-2952

Hopewell

Hopewell Presbyterian Church	No phone
------------------------------------	----------

CITY OFFICES

Anthony

Anthony Chamber of Commerce.....	620-842-5456
Anthony Police Department.....	620-842-3134
City Building/Clerk.....	620-842-5434

Attica

Attica Police Department.....	620-254-7291
City Building/Clerk.....	620-254-7216

Harper

Harper Chamber of Commerce.....	620-896-2511
Harper City Building/Clerk.....	620-896-2511
Harper Police Department.....	620-896-2853

COMMUNITY SERVICE ORGANIZATIONS

American Cancer Society	1-800-227-2345
American Legion Auxillary	620-842-3275
American Legion Post #54.....	620-842-3534
Anthony Industrial Development.....	620-842-3453
Anthony Masonic Lodge.....	620-896-7870
Anthony Ministerial Association	620-842-5395
Anthony Order of Easter Star	620-842-3175
Anthony United Methodist Women.....	620-842-3804
Anthony Volunteer Fire Department	620-842-3922
Athena Club	620-842-3430
Beta Sigma Phi	
Laureate Beta Alpha	620-842-5683
Preceptor Beta.....	620-842-3379
Boy Scouts/Cub Scouts Troop #855	620-842-5449

COMMUNITY SERVICE ORGANIZATIONS (Continued)

Boy Scouts/Cub Scouts Troop #851	620-842-5889
Congregational Church Women's Fellowship.....	620-842-5804
Epsilon Sigma Alpha Sorority	620-435-6211
4-H Hilltoppers.....	620-435-6961
Spring Robins.....	620-896-7048
Girl Scouts Service Manager	620-842-3496
Harper County Area Retired School Personnel	620-842-5325
Harper County Certified Emergency Response Team (CERT).....	620-842-3506
Harper County Community Foundation	620-842-3723
Harper County Genealogical Society.....	620-478-2563
Harper County Interagency Coordinating Council (ICC).....	620-842-5132
Harper County Jaycees	620-896-7960
Harper County Local Emergency Planning Committee (LEPC).....	620-842-5132
Harper County Prevention of Underage Drinking Grant (PUD)	316-243-8962
Harper County Men's Bowling Association.....	620-842-5019
Harper County Ministerial Association	620-842-3322
Harper County Wheat Growers Association.....	620-842-3471
Harper County Women's Bowling Association	620-842-3874
Harper County Youth's Bowlers	620-842-5845
Harper Rebekah Lodge #32	620-842-5494
Higher Ground/Leather Bound (Ignition Youth/Sparks Kids)	620-842-5900
Ignition Youth.....	620-842-5900
Kiwanis Club	620-842-5512
Lions Club.....	620-842-5512
Parent Teacher Support Groups	
Anthony – FOCUS.....	620-842-3647
Chaparral – Big Blue Backers.....	620-896-2291
Harper – HOPE.....	620-532-5389
Past Matron's Club	620-896-2519
P.E.O. Club, Chapter, BU	620-842-5550
SADD	316-243-8962
SJA – Knights of Columbus	620-845-1307
SJA – Catholic Youth Organization	620-962-5263
Sparks Kids	620-842-5900
United Fund	620-842-3421
Youth Friends.....	620-704-6642

COUNTY OFFICES – HARPER COUNTY**County Offices Toll Free Number: 1-877-537-2110**

Administrator	620-842-6007
Aging.....	620-842-5104
Appraiser.....	620-842-3718
Attorney	620-842-6070
Clerk.....	620-842-5555
Clerk of the District Court	620-842-3721
Commissioners.....	620-842-5555
Community Services	620-842-3991

COUNTY OFFICES – HARPER COUNTY (Continued)

County Offices Toll Free Number: 1-877-537-2110

Communications (Dispatch)	620-842-3086
Court Services Officer	620-842-3586
Crime Stoppers.....	620-842-5232
Economic Development.....	620-842-6004
Emergency Management/EMS (911)	620-896-3506
Environmental Services (SCLEPP)	620-842-6000
Extension.....	620-842-5445
Health Department/Home Health Agency	620-842-5132
Register of Deeds.....	620-842-5336
Landfill & Recycling Center.....	620-896-7150
Sheriff & Jail (911)	620-842-5135
SCK Community Correction.....	620-842-5499
Treasurer	620-842-5191
Weed Dept	620-842-3021

DISABILITY SERVICES

Arrowhead West, Inc.	1-800-794-8825
Blind Services (DCF).....	1-888-369-4777
Bridges to Learning.....	620-896-7550
Client Assistance Program.....	1-800-432-2326
Disabled Adults.....	1-800-432-2326
Horizons Mental Health Center	620-842-3768
Prairie Independent Living	1-888-715-6818
Talking Book Services.....	1-800-234-0529
Vocational Rehabilitation Services (DCF)	1-888-369-4777

EDUCATION

Anthony Elementary School	620-842-3743
Anthony Learning Center	620-842-3325
Attica Grade School.....	620-254-7314
Attica High School.....	620-254-7915
Blessed Beginnings Preschool	620-842-3022
Bridges to Learning Preschool.....	620-896-7550
Chaparral High School.....	620-842-5155
Or	620-896-7303
Harper County Early Head Start	1-800-684-3962 or 620-842-3999
Harper Elementary School.....	620-896-2913
Pratt Community College – Outreach Center	620-842-5155
USD# 361 Anthony-Harper Administrative Office.....	620-842-5183
USD# 511 Attica Administrative Office.....	620-254-7661
Harper County Area Family Educator (Home School).....	620-842-3530

EMERGENCY & CRISIS – Dial 911 for Emergencies only

Anthony Police Department (911).....	620-842-5123
Attica Police Department (911)	620-254-7291

EMERGENCY & CRISIS – Dial 911 for Emergencies only (Continued)

Harper Police Department (911).....	620-896-2853
Harper County Communications (Dispatch)	620-842-3086
Harper County EMS/EM (911).....	620-842-3506
Harper County Sheriff Department (911)	620-842-5135
Harper County Crime Stoppers.....	620-842-5232
Adult/Child Abuse Hotline	1-800-922-5330
American Red Cross	316-219-4000
Bureau of Alcohol, Tobacco, & Firearms (ATF)	1-800-283-4867
Centers for Disease Control & Prevention (CDC).....	404-639-3311
Federal Emergency Management Agency (FEMA)	1-800-427-2354
Harper County Certified Emergency Response Team (CERT).....	620-842-3506
Horizons Mental Health Center Crisis Line.....	1-800-794-0163
Kansas Emergency Management.....	785-274-1409
Local Emergency Planning Committee (LEPC).....	620-842-5132
Preparedness Regional Public Health Coordinator.....	620-243-2520
Salvation Army	785-537-0010
Sexual Assault/Domestic Violence Center	1-800-701-3630

EMPLOYMENT SERVICES

Arrowhead West	1-800-794-8825
Cowley Workforce Center	1-800-326-0141
Harper County Economic Development.....	620-842-6004
Senior Work Experience Project (SWEP)	316-219-4044
Unemployment Call Center	1-800-292-6333
Vocational Rehabilitation Services (DCF)	1-888-369-4777
Wichita Work Force Center	316-771-6600

FINANCIAL/OTHER ASSISTANCE**Clothing**

Anthony Thrift Shop	620-842-3888
Harper Econ Shop	No phone

Food/Meals

Anthony Congregate/Home Delivered Meals.....	620-842-5985
Anthony Food Bank.....	620-842-3888
Attica Congregate/Home Delivered Meals.....	620-254-7371
Department of Children & Family Services (DCF– Food Stamps).....	1-888-369-4777
Food 4 Kids (School Back-pack program – Kathy Kersten)	620-842-3743
Harper Congregate/Home Delivered Meals.....	620-896-2063
Harper Food Bank.....	620-896-2520
TEFAP/USDA Commodity Foods (Dept. on Aging& Disability Services).....	1-877-537-2110
United Methodist Church Commodity Supplemental Food	620-842-5486
United Methodist Church/Mid-Cap Summer Food Program.....	620-842-5486
WIC (Women, Infants and Children Nutrition Program)	620-842-5132
American Red Cross	316-219-4000
Mid-Cap	620-532-2990
Military OneSource.....	1-800-342-9647

FINANCIAL/OTHER ASSISTANCE (Continued)

Financial

Department of Children & Family Services (DCF)	1-888-369-4777
Ministerial Alliance - Contact Law Enforcement through Dispatch for referral.....	620-842-3086
Railroad Retirement	316-687-5973
Salvation Army	785-537-0010
Social Security	1-800-772-1213
Veterans Administration Service Representative	620-221-9479

Health

Children's Mercy – Family Health Partners	1-877-347-9363
Department of Children & Family Services (DCF)	1-888-369-4777
Farmworker Health Program (Harper County Health Dept.)	620-842-5132
HealthWave.....	1-800-792-4884
Unicare Health Plan of Kansas	1-866-408-7105
Working Healthy.....	1-800-449-1439

Housing

Anthony Housing Authority	620-842-5331
HUD Housing	620-442-6063
Interfaith Housing Services, Inc	620-842-8370
Kansas Fair Housing	1-800-669-9777
Kansas Warm Homes Project	785-271-3106
Mennonite Housing.....	316-942-4848
Prairie Independent Living	1-888-715-6818
Redden Village.....	620-825-4808
SCKEDD (Weatherization)	1-800-658-1742
Village East (Homestead)	316-554-1345

Legal

Kansas Lawyer Referral Services	1-800-432-3593
Kansas Legal Services	316-265-9681
Senior Citizens Law Project.....	1-888-353-5337

Prescriptions

Many pharmaceutical companies offer patient assistance programs. Program information may be found on the internet at needymeds.com &/or through your health care provider.

Community Rx Kansas

Prescription Network of Kansas	1-800-279-3022
Right Choice Pharmacy	1-866-424-6423
Farmworker Health Program (Harper County Health Dept.)	620-842-5132
HealthWave/Health Connect (DCF)	1-800-792-4884

FINANCIAL/OTHER ASSISTANCE (Continued)**Prescriptions**

Medicaid (DCF).....	1-888-369-4777
Medicare Rx.....	1-800-633-4227
SHICK.....	1-800-860-5260
Working Healthy (DCF)	1-800-449-1439

Transportation

Anthony Taxi Service	620-842-3149
Harper County Public Transportation.....	620-842-5104

Utilities

Gift of Warmth (Salvation Army).....	1-877-566-2769
LIEAP (DCF).....	1-888-369-4777

HEALTH SERVICES**Clinics**

Anthony Medical Center.....	620-842-5111
Anthony Outpatient Specialty Clinic	620-842-5706
Anthony Primary Care Center	620-842-5144
Attica Rural Health Clinic	620-254-7272
Harper County Health Department	620-842-5132
Harper Hospital Medical Clinic	620-896-7306
Harper Hospital Medical Clinic	1-800-896-7306

Chiropractic

Knapic Chiropractic	620-842-5252
---------------------------	--------------

Dental

Anthony Dental	620-842-3844
Greg J. Hom, DDS	316-722-3191
Harold A. Small, DDS	620-435-6367
Hunter Health Clinic	316-262-2415
Kansas Foundation of Dentistry for the Handicapped.....	785-273-1900
Small Smiles Dental Clinic.....	316-686-2721
Sunflower Dental Family Dentistry	620-896-7650
Walker Family Dental.....	620-842-5936

Environmental Services

SCLEPG.....	620-842-6000
-------------	--------------

Fitness

Anthony Wellness Center	620-842-5190
Harper Wellness Center	620-896-7324

Hearing

Harper County Health Department	620-842-5132
---------------------------------------	--------------

HEALTH SERVICES (Continued)**Hearing**

Midwest Hearing Aids, Inc 620-842-3030

Home Health Agencies

Harper County Health Dept./Harper County Home Health Agency 620-842-5132

Hospices

Harry Hynes Memorial Hospice 1-800-767-4965

Hospice Care of Kansas 1-866-662-3619

South Wind Hospice, Inc 620-672-7553

Hospitals

Anthony Medical Center..... 620-842-5111

Hospital District #5 of Harper County (Harper Hospital) 620-896-7324

Mental Health Services

Horizons Mental Health Center 1-800-794-0163 or 620-842-3768

Prairie View, Inc 1-800-362-0180

Sexual Assault/Domestic Violence Center 1-800-701-3630

Nursing Facilities/Assisted Living

Anthony Community Care Center 620-842-5187

Attica Long Term Care Unit 620-254-7253

Country Living 620-842-5858

Harper Hospital Long Term Care 620-896-7324

Heritage Estates 620-896-2646

Home Comfort 620-842-5111

Pharmacies

Harper Pharmacy 620-896-7700

Or 1-877-570-0077

Irwin-Potter Drug 1-800-881-5119

Or 620-842-5119

VA Hospital Pharmacy 1-888-878-6881

Screenings (In-home Services/Nursing Facility Placement/Case Management)

Arrowhead West (Developmental Disabilities) 620-672-1005

Harper County Department on Aging (60 or over) 620-842-5104

Horizons Mental Health Center (Mental Health Services) 620-842-3768

Client Assistance Program (Under age 60) 1-800-432-2326

South Central Kansas Area Agency on Aging (60 or over) 1-800-362-0264

Tobacco Cessation

Tobacco Quitline 1-866-526-7867

Vision

Blind Services 1-888-369-4777

Envision Rehabilitation Center (Michael J. Eck) 316-682-4646

HEALTH SERVICES (Continued)

Vision

Greene Vision Group	1-800-696-4467
Or	620-842-5596
Harper County Health Department	620-842-5132

INFORMATION LINES

American Association of Retired Persons (AARP)	1-800-523-5800
AIDS Hotline	1-800-232-4636
American Cancer Society – High Plains Division	1-800-227-2345
American Diabetes Association – Kansas Affiliate	1-800-362-1355
Arthritis Foundation – Kansas Affiliate	1-800-362-1108
Attorney General’s Office – Consumer Protection Division	1-800-432-2310
Automobile Safety Hotline	1-800-424-9393
Blue Cross Blue Shield (BCBS)	1-800-766-9012
Brain Injury Association	1-800-783-1356
Cancer Hotline	1-800-4-CANCER
Catholic Charities	316-263-0507
Child Help USA	1-800-422-4453
Center for Community Self-Help	1-800-445-0116
Consumer Assistance for Aging	1-800-434-6237
Consumer Product Safety Commission Hotline	1-800-638-2772
Consumer Protection	1-800-432-2310
Crime Victim Information Referral	1-800-828-9745
Department of Children & Family Services (DCF)	1-888-369-4777
Disability Rights Center of Kansas	1-800-432-2326
First Candle SIDS Alliance	1-800-221-SIDS
Health Wave	1-800-792-4884
Horizons Mental Health Center (Crisis Line)	1-800-794-0163
Immigration & Citizenship Service	1-800-375-5283
Juvenile Diabetes Foundation Hotline	1-800-223-1138
Kansas Alzheimers Helpline	1-800-432-3535
Kansas Child Abuse Hotline	1-800-922-5330
Kansas Children’s Service League	316-942-4261
Kansas Corporation Commission – Utilities Division	1-800-662-0027
Kansas Department on Aging	1-800-432-3535
Kansas Department of Insurance	1-800-432-2484
Kansas Mothers Against Drunk Drivers (MADD)	1-800-228-6233
Kansas School Safety Hotline	1-877-626-8203
Kansas Veteran’s Home & Representative	620-221-9479
Kansas Victim’s Rights Program	1-800-828-9745
Kansas Welfare Fraud Hotline	1-800-432-3913
Medicaid Consumer Assistance Unit	1-800-766-9012
Medicaid Provider Assistance Unit	1-800-933-6593
Medicare (Replace lost Medicare cards)	1-800-772-1213

INFORMATION LINES (Continued)

Mid-America Poison Center	1-800-222-1222
Military OneSource	1-800-342-9647
National Child Abuse Hotline	1-800-422-4453
National Organization for Victim Assistance	1-800-879-6682
National Center for Missing & Exploited Children	1-800-843-5678
National Runaway Switchboard	1-800-786-2929
Nineline (Crisis Intervention)	1-800-999-9999
Parents Anonymous Hotline	630-527-3982
Parents Helping Parents	1-800-332-6378
Parents Help Line	1-800-332-6378
Poison Control Center – Kansas City, KS	1-800-332-6633
Railroad Retirement	1-877-772-5772
Social Security Administration	1-800-772-1213
South Central Kansas Area Agency on Aging	1-800-362-0264
Tobacco Quitline – Kansas	1-866-526-7867
United Way InfoLine (211)	316-267-4327
Venereal Disease Hotline (STD Info.)	1-800-227-8922

LIBRARIES

Anthony Public Library	620-842-5344
Attica Public Library	620-254-7767
Harper Public Library	620-896-2959

MUSEUMS & HISTORICAL SITES

Harper Art Museum (Pat Francis) Harper	620-254-7784
Harper Historical Museum (Mickey Bowen) Harper	620-896-2505
Harper Train Station (City of Harper)	620-896-2511
Historical Museum of Anthony, Inc., Anthony	620-842-3852
Historic Anthony Theater, Anthony (Sunflower RC&D)	620-896-7378
Historic Harper County Courthouse, Anthony	620-842-5555
Martha Keifer House	620-896-2959
Old Harper Fountain	620-896-2959
Runnymede Church (Mickey Bowen) Harper	620-896-2505
September 11 Memorial, Anthony	620-842-3134

NEWSPAPERS

Anthony Republican	620-842-5129
Attica Independent	620-254-7660
Harper Advocate	620-896-7311
Harper County Herald	620-842-8887
Prairie Connection	620-896-7566

RECREATION

Anthony

Anthony Archery Range (Southern KS Bow Hunters Club)	620-842-5833
Anthony Lake Gun Club	620-842-5434
Anthony City Lake & Golf Course	620-842-5434
Anthony Public Parks	620-842-5434
Anthony Public Swimming Pool	620-842-5392
Anthony Recreation Commission	620-842-5434
Anthony Skate Park	620-842-5434
Cammi Hostetler Dance Productions	620-842-5580
Park Hill Lanes (Bowling)	620-842-5571
School Activities (USD 361)	620-842-5183

Annual Events

Anthony City Wide Garage Sale	620-842-5456
Anthony Fall Fest	620-842-5456
Anthony Merchants Sidewalk Sale	620-842-5456
Anthony Kiwanis Pancake Feed	620-842-5512
Anthony Kiwanis Spook Parade	620-842-5512
Arts & Crafts Shows	620-842-5456
Christmas Parade/Light Up Anthony/Santa visits	620-842-5456
Fourth of July (County wide)	620-842-5456
Sunflower Balloon Fest	620-842-5456

Attica

Attica Public Swimming Pool	620-254-7216
Attica Recreation Commission	620-254-7216
School Activities (USD 511)	620-254-7661

Annual Events

Attica Rodeo	620-254-7216
Fourth of July (County wide)	620-842-5456
Octoberfest	620-254-7216

Harper

Harper Public Parks	620-896-2511
Harper Public Swimming Pool	620-896-2511
Harper Recreation Commission	620-896-2511
The Lighthouse	620-896-7522
Rolla Rena Skate Center	620-896-7861
School Activities (USD 361)	620-842-5183

Annual Events

Citywide Garage Sale/Spring Fling	620-896-2511
Demolition Derby	620-896-2511
Fourth of July (County wide)	620-842-5456

RECREATION (Continued)

Harper Annual Events

Harper County Fair	620-842-5445
Harperfest Activities	620-896-2511
Pancake & Sausage Feed	620-896-2004
Saint Patrick's Day Dinner	620-896-7886
Santa Visits Harper	620-896-2511

TRANSPORTATION

Anthony Taxi Service	620-842-3149
Harper County Public Transportation	620-842-5104

UTILITY SERVICES

Atmos (Gas Service)	1-888-286-6700
AT&T (Telephone)	1-800-246-8464
Bluff City Water (Kenneth Dillingham)	620-967-4636
Central Energy (Propane)	620-842-2673
City of Anthony (Electric, water, sewer)	620-842-5960
City of Attica (Electric, water, sewer)	620-254-7228
City of Harper (Water, sewer)	620-896-2511
KanOkla (Telephone)	1-800-526-6552
Kansas Gas Service (Gas)	1-888-482-4950
Landfill & Recycling Center (Household waste)	620-896-7150
N & J Sanitation Service	620-896-2457
Plumb Thicket Landfill	620-896-2229
Rural Water District #1 (Bill & Linda Sanders)	620-896-2542
Rural Water District #2 (Dan & Beth Bird)	620-842-5430
Rural Water District #3 (Larry Miller)	620-896-2398
Rural Water District #4 (Jim Coady)	620-962-5276
Rural Water District #5 (Gene Grabs)	620-896-7933
SBC (Telephone)	1-800-246-8464
Water Testing/Wastewater Permits	620-842-6000
Westar Energy (Electric)	1-800-544-4587
Wheatland (Electric & Gas)	1-800-762-0436
Wyatt Trash Service	620-842-3773

AGENCY BIOGRAPHIES

American Cancer Society – 818 N. Emporia, Suite 100, Wichita, KS 67214; Telephone: 1-800-227-2345; Fax: 316-265-3490; Website: www.cancer.org . Having cancer is hard, but finding help should not be. The American Cancer Society Patient Navigator Program is here to connect patient who are facing cancer with the help they need. Navigators assist patients in coping with the physical, emotional, and financial challenges of their cancer journey, and serve as guides to help them try to overcome obstacles that may prevent them from receiving high-quality cancer care. If you or a loved one is facing cancer, call the American Cancer Society at 1-800-227-2345 or visit www.cancer.org. Help is available 24 hours a day, seven days a week.

Anthony Medical Center - is a multi-campus facility that combines hospital inpatient and outpatient services with primary care and wellness. Patients of all ages may be seen locally at the Anthony Primary Care Clinic or the Outpatient Specialty Clinic. AMC also operates a clinic in Hardtner, KS as well as owning and operating the Anthony Wellness Center, which serves the community's healthy lifestyle needs. Services and specialties offered at AMC include: MRI, CT Scan, Digital Mammography, Sonogram, X-ray, Bone Density Testing, Full Lab Services, Physical, Occupational, and Speech Therapies, Gynecology, Urology, Orthopaedics, Oncology/Hematology, and General Surgery. AMC also provides state of the art care in their 24-HR Emergency Room. The ER is equipped with life saving fiber optic technology, and the ER staff is certified in Advanced Cardiac Life Support and Advanced Trauma Life Support. **AMC** – 1101 East Spring, Anthony, KS 67003. Toll free 1-866-842-5111. Anthony Wellness Center, 1101 E. Spring, Anthony, KS 620-842-5190.

Arrowhead West, Inc. – Not for profit agency that provides support services for children age 0-3 and adults 18 years and older with developmental disabilities and delays. These support services focus on the needs of the individuals and their families and to support each person's needs, choices and participation in

the community. AWI also provides early intervention services to children through free screenings by testing developmental levels, hearing and vision. We serve 14 counties: Barber, Clark, Comanche, Edwards, Ford, Gray, Harper, Hodgeman, Kingman, Kiowa, Meade, Ness, Pratt and Sedgwick. Our administrative office is in Dodge City, 1100 East Wyatt Earp Blvd. (620) 227-8803; www.arrowheadwest.org. For Child Services in Pratt, 620 East Second Street (620) 672-1005 or Toll Free 1-888-500-1804.

Child Start– 1069 S. Glendale, Wichita, KS 67218; Telephone (1-800-684-3962 or 316-682-3962); Fax (316-689-8713); Website: www.childstart.org . The Child Care Aware Resource and Referral Program serves families who need child care services. The program also provides training, technical assistance and support to child care providers (family child care, child care centers, school-age programs and preschools). The District Office serves 11 counties: Butler, Cowley, Harper, Harvey, Kingman, Reno, Rice, McPherson, Marion, Sedgwick and Sumner. The Call Center referral service also serves the fifty-three counties in the 316 and 620 area codes.

Children's Mercy Family Health Partners (CMFHP) is a not for profit safety net health plan owned by Children's Mercy Hospitals and Clinics, a not for profit free standing pediatric health system based in Kansas City. CMFHP operates an integrated care system that contracts with the states of Kansas and Missouri to provide health insurance benefits to children and adults that are eligible for Medicaid or the State Children's Health Insurance Plan (SCHIP). We are dedicated to serving low-income families and other vulnerable populations, the providers who care for them, and advocates who assist them. We are committed to investment in the communities we serve and improving the quality, access and efficiency of health care within those communities. For more information, visit www.fhp.org.

Connecting Families – 1-800-898-4903, 405 E. Iron, Salina, KS 67401; Website: www.st.francis.org . Connecting Families is a free service that covers the Harper, Kingman, Rice, Sumner, Harvey, Reno, and McPherson counties. Connecting Families is a Saint Francis Community Services program that provides brief interventions and parenting education sessions to help families build on their strengths and maintain family connections. Connecting Families connect families with community support services and educational resources. We also offer a wide range of prevention services to children and families to include case management services.

DCF –Department of Children and Family Services, 1809 S. Main, Winfield, KS 67156; 620-221-6400; Fax: 620-221-0698. DCF offers the following services for qualified individuals/families: Child Care Assistance; Long Term Care Assistance; Abuse and Neglect investigations for children and adults; Child Support Services; Employment Services for Persons with disabilities; Assistance with Parenting Challenges; Medicaid; Cash Assistance; Food Assistance.

Harper County Health Department/Harper County Home Health Agency – 123 N. Jennings, Anthony, KS 67003, Telephone 620-842-5132; Fax 620-842-3152. Website: health pages under www.harpercountyks.gov .

Services include: Immunizations; Basic Health Checks; Well Baby Checks; Daycare Physicals; Kindergarten Screenings; Women, Infant and Children Nutrition Program (WIC); Healthy Start Home Visits; Family Planning; Child Care Licensing; CARE Assessments for nursing home placement; TB Skin Testing; Reportable Disease Investigations; Environmental Services; In-home services through private pay, Senior Care Act and HCBS contracts; Home Health services through Medicare, Medicaid & Private Insurance; and Public Health Emergency Preparedness and Response Services. We also provide information and referrals services and serve as an access site for SRS; HealthWave; Veterans Administration Services; Kansas Farmworker Program; Sexual Assault and Domestic Violence Center; Kansas Tuberculosis Program; Kansas Tobacco Quitline Program;

and also offer space for other agencies that need an office to meet with clients in our community.

Harper Hospital District No. 5--Harper, KS - - 700 W 13th Street, Harper, KS 67058 Telephone 620-896-7324 or 620-842-5522; Fax 620-896-7127. www.hhd5.com As a Critical Access Hospital, we have 25 licensed beds, including Acute, Swingbed Skilled, and Swingbed Intermediate (Long-Term care) levels of care. We offer 24-hour Emergency Room and staff certified in Advanced Trauma Life Support. Outpatient Services include: CT Scans, Sonograms, MRI, Physical Therapy, Speech Therapy, Bone Density Testing, Radiology and Lab services and many others. Our Medical Staff provide a variety of outpatient Diagnostic Procedures. A number of Specialty Physicians provide surgery, consultation and other services on a regularly-scheduled basis.

Harper Hospital operates Rural Health Clinics located in Harper, Argonia, Attica and Conway Springs. Our Assisted Living Facility, Heritage Estates, an extension of the hospital, is conveniently located across the street. It consists of indoor apartments as well as outdoor cottages. Staff are on duty 24/7. Our Wellness Center is located in our East Campus, where a variety of classes and modern exercise equipment is available for use with membership. We offer “Quality Care Right Here at Home”.

Horizons Mental Health Center – 123 N. Pennsylvania, Anthony, KS 67003 620-842-3768 or 1-800-794-0163. Horizons provides individual and family psychotherapy for people ages 4 and up, Community Based Services for seriously emotionally disturbed children and their families, and Community Support Services for Adults who have serious and persistent mental illness. We offer employment services, parent support services and psychiatric medication services to all ages in need. Horizons is also the gatekeeper for admissions to Larned State Hospital and must provide emergency mental health screenings and services 24 hours a day. Paired with these mandated services, Horizons also participates on many community boards and councils including the local Interagency Coordinating Council, Multidisciplinary Child Protection Teams, Juvenile and Adult Corrections Boards, and respond to other agencies when the need arises.

We coordinate and participate in the local school districts' Personal Safety Awareness Program, and are mandated reporters of suspected child abuse. We conduct court ordered Psychological Evaluations, Court Competency Evaluations and frequently testify in court when appropriate. We are trained to complete Level II nursing home screens, Drug and Alcohol Evaluations, and ADHD Evaluations. We frequently consult with hospital staff, law enforcement, school personnel, attorneys, court service offices, social service agencies, foster care agencies and primary care physicians. In Harper County, Angela Baker is contracting with Early Head Start, providing consultation services. Visit us on the web at HMHC.com

Military OneSource – Military OneSource is a 24/7 assistance line and website for military families to access military family programs, educational materials, and community support resources at no cost. For 24/7/365 assistance, military families are encouraged to contact Military OneSource at 1-800-342-9647 or to visit www.militaryonesource.com.

TFI Family Services – Telephone: 877-921-4114. TFI Family Services is a private non-profit statewide child welfare and behavioral health organization that was founded in 1965.

The agency is a community based service provider of foster care, reintegration, and adoption services. TFI Family Services offers the following assistance with foster care services: 24 hour on-call support, Social Worker assigned to you, free initial and ongoing training, range of daily reimbursement rates, Resource Parent liability insurance, and more. Please call the above number for more information on how to become a foster adoptive parent with TFI.

U.S.D 361 Anthony-Harper – 124 N. Jennings, Anthony, KS 67003; Telephone 620-842-5183; Fax 620-842-5307; website: www.usd361.org.

Workforce Center (Sumner & Wichita) – The Sumner Workforce Center is a single point of entry to a network of employment and training needs. Another key role of the center is to help job seekers access the tools needed to manage their careers through high quality information and services. Employers and job seekers are welcome to come in on a regular basis to access services. (There is NO FEE for services). Arbor E&T 316-771-6700; Sumner Workforce Center 1-800-326-0141; Wichita Workforce Center 316-771-6600.

V. Detail Exhibits

[VVV Research & Development INC]

Patient Origin & Access

[VVV Research & Development INC]



Harper County - KS Residents

PO103E - 2009
Annual

Discharges by Hospital, Age, and Major Service

Hospital	Total Discharges		Pediatric		Age 18 - 44		Age 45 - 64		Age 65 - 74		Age 75 +		Psychiatric		Obstetric		Newborn		Pct Surg
	Cases	Pct	Cases	Pct	Cases	Pct	Cases	Pct	Cases	Pct	Cases	Pct	Cases	Pct	Cases	Pct	Cases	Pct	
Harper Hosp District #5 - KS	239	26.6	9	3.8	15	6.3	40	16.7	40	16.7	133	55.6	2	0.8	0		0		1.7
Via Christi Rgnl MC-Wichita KS	206	23.0	8	3.9	20	9.7	31	15.0	35	17.0	74	35.9	12	5.8	13	6.3	13	6.3	38.3
Wesley Medical Cntr-Wichita KS	177	19.7	7	4.0	15	8.5	52	29.4	10	5.6	15	8.5	0		40	22.6	38	21.5	36.2
Anthony Medical Center - KS	158	17.6	3	1.9	11	7.0	26	16.5	25	15.8	89	56.3	4	2.5	0		0		6.3
Sumner Rgnl MC-Wellington KS	46	5.1	2	4.3	1	2.2	0		2	4.3	3	6.5	0		19	41.3	19	41.3	10.9
Medicine Lodge Mem. Hosp-KS	23	2.6	4	17.4	0		8	34.8	5	21.7	6	26.1	0		0		0		4.3
Pratt Regional Med Center-KS	21	2.3	0		0		2	9.5	3	14.3	6	28.6	0		5	23.8	5	23.8	52.4
Ninnescah Valley HS-Kingman KS	10	1.1	0		0		3	30.0	3	30.0	4	40.0	0		0		0		30.0
Other Hospitals	17	1.9	0		0		5	29.4	5	29.4	3	17.6	3	17.6	1	5.9	0		29.4
Total	897	100.0	33	3.7	62	6.9	167	18.6	128	14.3	333	37.1	21	2.3	78	8.7	75	8.4	20.3



Harper County - KS Residents

PO103E - 2010
Annual

Discharges by Hospital, Age, and Major Service

Hospital	Total Discharges		Pediatric		Age 18 - 44		Age 45 - 64		Age 65 - 74		Age 75 +		Psychiatric		Obstetric		Newborn		Pct Surg
	Cases	Pct	Cases	Pct	Cases	Pct	Cases	Pct	Cases	Pct	Cases	Pct	Cases	Pct	Cases	Pct	Cases	Pct	
Via Christi Rgnl MC-Wichita KS	223	24.5	9	4.0	26	11.7	59	26.5	39	17.5	65	29.1	12	5.4	7	3.1	6	2.7	43.0
Harper Hosp District #5 - KS	204	22.4	3	1.5	16	7.8	31	15.2	30	14.7	124	60.8	0		0		0		2.0
Wesley Medical Cntr-Wichita KS	183	20.1	4	2.2	20	10.9	34	18.6	14	7.7	24	13.1	0		45	24.6	42	23.0	38.8
Anthony Medical Center - KS	171	18.8	10	5.8	16	9.4	21	12.3	26	15.2	95	55.6	3	1.8	0		0		1.8
Sumner Rgnl MC-Wellington KS	36	4.0	0		0		2	5.6	1	2.8	1	2.8	0		16	44.4	16	44.4	22.2
Medicine Lodge Mem. Hosp-KS	23	2.5	0		0		3	13.0	2	8.7	18	78.3	0		0		0		
Pratt Regional Med Center-KS	20	2.2	0		0		5	25.0	1	5.0	2	10.0	0		6	30.0	6	30.0	50.0
Mercy Hospital - Moundridge KS	8	0.9	0		0		2	25.0	1	12.5	5	62.5	0		0		0		
Promise Regnl MC-Hutchinson KS	8	0.9	0		0		0		1	12.5	1	12.5	5	62.5	1	12.5	0		25.0
Ninnescah Valley HS-Kingman KS	5	0.5	0		0		2	40.0	1	20.0	2	40.0	0		0		0		
Other Hospitals	29	3.2	1	3.4	3	10.3	7	24.1	4	13.8	7	24.1	7	24.1	0		0		20.7
Total	910	100.0	27	3.0	81	8.9	166	18.2	120	13.2	344	37.8	27	3.0	75	8.2	70	7.7	22.0



Harper County - KS Residents

PO103E - 2011
Annual

Discharges by Hospital, Age, and Major Service

Hospital	Total Discharges		Pediatric		Age 18 - 44		Age 45 - 64		Age 65 - 74		Age 75 +		Psychiatric		Obstetric		Newborn		Pct Surg
	Cases	Pct	Cases	Pct	Cases	Pct	Cases	Pct	Cases	Pct	Cases	Pct	Cases	Pct	Cases	Pct	Cases	Pct	
Wesley Medical Cntr-Wichita KS	188	23.2	10	5.3	15	8.0	35	18.6	17	9.0	37	19.7	1	0.5	38	20.2	35	18.6	33.5
Harper Hosp District #5 - KS	175	21.6	6	3.4	6	3.4	35	20.0	27	15.4	101	57.7	0		0		0		
Anthony Medical Center - KS	171	21.1	9	5.3	19	11.1	26	15.2	27	15.8	89	52.0	0		1	0.6	0		1.2
Via Christi St.Fran-Wichita KS	154	19.0	7	4.5	23	14.9	39	25.3	29	18.8	37	24.0	10	6.5	5	3.2	4	2.6	45.5
* Sumner Rgnl MC-Wellington KS	35	4.3	0		1	2.9	2	5.7	0		0		0		17	48.6	15	42.9	20.0
Medicine Lodge Mem. Hosp-KS	19	2.3	0		0		5	26.3	2	10.5	12	63.2	0		0		0		
Pratt Regional Med Center-KS	14	1.7	0		0		0		2	14.3	3	21.4	0		4	28.6	5	35.7	35.7
Via Christi St.Tere-Wichita KS	14	1.7	0		0		0		4	28.6	4	28.6	0		3	21.4	3	21.4	35.7
Hutchinson Reg Med Center - KS	12	1.5	0		1	8.3	0		0		1	8.3	10	83.3	0		0		
Newton Medical Center - KS	5	0.6	0		0		0		1	20.0	1	20.0	1	20.0	1	20.0	1	20.0	40.0
Sumner Cty Dst 1 Hsp-Cldwll KS	5	0.6	0		0		2	40.0	1	20.0	2	40.0	0		0		0		
Other Hospitals	18	2.2	1	5.6	2	11.1	8	44.4	2	11.1	2	11.1	1	5.6	1	5.6	1	5.6	38.9
Total	810	100.0	33	4.1	67	8.3	152	18.8	112	13.8	289	35.7	23	2.8	70	8.6	64	7.9	19.9



Anthony Medical Center - KS

PO101E-2009
Annual

Discharges by Major Service, Age, and Patient County of Residence

County	Total Discharges		Pediatric		Age 18 - 44		Age 45 - 64		Age 65 - 74		Age 75 +		Psychiatric		Obstetric		Newborn		Surg Pct
	Cases	Pct	Cases	Pct	Cases	Pct	Cases	Pct	Cases	Pct	Cases	Pct	Cases	Pct	Cases	Pct	Cases	Pct	
Harper, KS	158	88.8	3	1.9	11	7.0	26	16.5	25	15.8	89	56.3	4	2.5	0		0		6.3
Barber, KS	7	3.9	0		0		3	42.9	0		4	57.1	0		0		0		
Alfalfa, OK	5	2.8	0		0		0		3	60.0	2	40.0	0		0		0		20.0
Other Counties	8	4.5	0		1	12.5	2	25.0	1	12.5	4	50.0	0		0		0		
Hospital Total	178	100.0	3	1.7	12	6.7	31	17.4	29	16.3	99	55.6	4	2.2	0		0		6.2



Anthony Medical Center - KS

PO101E-2010
Annual

Discharges by Major Service, Age, and Patient County of Residence

County	Total Discharges		Pediatric		Age 18 - 44		Age 45 - 64		Age 65 - 74		Age 75 +		Psychiatric		Obstetric		Newborn		Surg Pct
	Cases	Pct	Cases	Pct	Cases	Pct	Cases	Pct	Cases	Pct	Cases	Pct	Cases	Pct	Cases	Pct	Cases	Pct	
Harper, KS	171	83.0	10	5.8	16	9.4	21	12.3	26	15.2	95	55.6	3	1.8	0		0		1.8
Grant, OK	12	5.8	0		1	8.3	1	8.3	0		10	83.3	0		0		0		
Barber, KS	6	2.9	0		1	16.7	2	33.3	1	16.7	2	33.3	0		0		0		
Sumner, KS	6	2.9	0		0		5	83.3	0		1	16.7	0		0		0		
Other Counties	11	5.3	0		0		2	18.2	3	27.3	5	45.5	1	9.1	0		0		
Hospital Total	206	100.0	10	4.9	18	8.7	31	15.0	30	14.6	113	54.9	4	1.9	0		0		1.5



Anthony Medical Center - KS

PO101E-2011
Annual

Discharges by Major Service, Age, and Patient County of Residence

County	Total Discharges		Pediatric		Age 18 - 44		Age 45 - 64		Age 65 - 74		Age 75 +		Psychiatric		Obstetric		Newborn		Surg Pct
	Cases	Pct	Cases	Pct	Cases	Pct	Cases	Pct	Cases	Pct	Cases	Pct	Cases	Pct	Cases	Pct	Cases	Pct	
Harper, KS	171	89.5	9	5.3	19	11.1	26	15.2	27	15.8	89	52.0	0		1	0.6	0		1.2
Grant, OK	7	3.7	0		2	28.6	1	14.3	0		4	57.1	0		0		0		
Barber, KS	6	3.1	1	16.7	0		0		1	16.7	4	66.7	0		0		0		
Other Counties	7	3.7	0		1	14.3	1	14.3	1	14.3	4	57.1	0		0		0		
Hospital Total	191	100.0	10	5.2	22	11.5	28	14.7	29	15.2	101	52.9	0		1	0.5	0		1.0



Harper Hospital District No. 5 - KS

PO101E-2008
Annual

Discharges by Major Service, Age, and Patient County of Residence

County	Total Discharges		Pediatric		Age 0 - 17		Age 18 - 44		Age 45 - 64		Age 65 - 74		Age 75 +		Psychiatric		Obstetric		Newborn		Surg
	Cases	Pct	Cases	Pct	Cases	Pct	Cases	Pct	Cases	Pct	Cases	Pct	Cases	Pct	Cases	Pct	Cases	Pct	Cases	Pct	
Harper, KS	308	80.8	11	3.6	23	7.5	56	18.2	51	16.6	165	53.6	2	0.6	0		0		0		1.3
Sumner, KS	42	11.0	4	9.5	3	7.1	7	16.7	6	14.3	22	52.4	0		0		0		0		2.4
Sedgwick, KS	12	3.1	0		1	8.3	2	16.7	1	8.3	8	66.7	0		0		0		0		
Kingman, KS	11	2.9	0		0		4	36.4	4	36.4	3	27.3	0		0		0		0		9.1
Other Counties	8	2.1	1	12.5	0		1	12.5	1	12.5	5	62.5	0		0		0		0		
Hospital Total	381	100.0	16	4.2	27	7.1	70	18.4	63	16.5	203	53.3	2	0.5	0		0		0		1.6



Harper Hospital District No. 5 - KS

PO101E-2009
Annual

Discharges by Major Service, Age, and Patient County of Residence

County	Total Discharges		Pediatric		Age 0 - 17		Age 18 - 44		Age 45 - 64		Age 65 - 74		Age 75 +		Psychiatric		Obstetric		Newborn		Surg
	Cases	Pct	Cases	Pct	Cases	Pct	Cases	Pct	Cases	Pct	Cases	Pct	Cases	Pct	Cases	Pct	Cases	Pct	Cases	Pct	
Harper, KS	239	80.5	9	3.8	15	6.3	40	16.7	40	16.7	133	55.6	2	0.8	0		0		0		1.7
Sumner, KS	34	11.4	1	2.9	6	17.6	3	8.8	5	14.7	19	55.9	0		0		0		0		2.9
Kingman, KS	14	4.7	0		0		4	28.6	3	21.4	6	42.9	0		1	7.1	0		0		
Other Counties	10	3.4	0		0		4	40.0	0		6	60.0	0		0		0		0		
Hospital Total	297	100.0	10	3.4	21	7.1	51	17.2	48	16.2	164	55.2	2	0.7	1	0.3	0		0		1.7



Harper Hospital District No. 5 - KS

PO101E-2010
Annual

Discharges by Major Service, Age, and Patient County of Residence

County	Total Discharges		Pediatric		Age 0 - 17		Age 18 - 44		Age 45 - 64		Age 65 - 74		Age 75 +		Psychiatric		Obstetric		Newborn		Surg
	Cases	Pct	Cases	Pct	Cases	Pct	Cases	Pct	Cases	Pct	Cases	Pct	Cases	Pct	Cases	Pct	Cases	Pct	Cases	Pct	
Harper, KS	204	78.5	3	1.5	16	7.8	31	15.2	30	14.7	124	60.8	0		0		0		0		2.0
Sumner, KS	24	9.2	0		0		1	4.2	3	12.5	20	83.3	0		0		0		0		
Kingman, KS	17	6.5	2	11.8	0		4	23.5	7	41.2	4	23.5	0		0		0		0		
Sedgwick, KS	8	3.1	0		0		0		0		8	100.0	0		0		0		0		
Other Counties	7	2.7	0		0		1	14.3	0		6	85.7	0		0		0		0		
Hospital Total	260	100.0	5	1.9	16	6.2	37	14.2	40	15.4	162	62.3	0		0		0		0		1.5



Anthony Medical Center - KS

OP TOT223E - 2009
Annual
Hospital - 171346

Total Outpatient Visits and Market Share by Revenue Category and Patient County Code

Revenue Category	Total Visits	20077 Visits	%	20007 Visits	%	40053 Visits	%	20191 Visits	%	40003 Visits	%	20173 Visits	%	40151 Visits	%	All Other Visits
1 Emergency Dept (45x)	901	789	27.3	19	1.6	27	52.9	10	0.2	6	27.3	9	0.0	2	7.1	39
2 Surgery (36x, 49x)	134	116	31.3	6	1.5	4	25.0	1	0.1	1	9.1	1	0.0	2	6.5	3
3 Observation (762)	84	74	25.0	3	3.0	2	50.0	1	0.1	1	25.0					3
11 Radiology-Diag (32x ex 322&323)	1,126	966	33.4	56	3.4	30	53.6	17	0.3	9	31.0	9	0.0	5	13.9	34
15 CT Scan (35x)	277	225	31.3	22	4.3	11	55.0	10	0.5	1	8.3	2	0.0	1	9.1	5
16 Mammography (401, 403)	192	156	52.2	18	51.4	5	45.5	2	0.1	3	50.0			1	20.0	7
17 Ultrasound (402)	78	67	16.8	1	0.7	4	100.0	2	0.1	1	20.0			2	28.6	1
19 Magnetic Resonance Tech (61x)	104	89	31.3	5	2.3	5	62.5	1	0.1	1	20.0			1	33.3	2
21 Chemotherapy (33x excl. 333)	144	67	93.1	68	100.0	6	100.0							3	100.0	
23 Pulmonary Function (46x)	34	28	50.0	2	3.9	1	33.3	3	0.7							1
26 Echocardiology (483)	24	21	75.0	2	33.3											1
35 Treatment Room (76x excl. 762)	892	749	55.5	92	21.5	18	69.2	9	0.4	2	20.0	2	0.0	1	20.0	19
36 Respiratory Services (41x)	73	61	42.4	3	7.3	3	100.0	3	0.9							3
37 EKG/ECG (73x)	308	262	36.5	13	2.7	10	62.5	4	0.3	7	70.0	1	0.0			11
38 Cardiology (48x excl. 481-483)	55	50	33.6	2	3.6					2	100.0					1
42 Physical Therapy (42x)	355	329	45.4	5	0.9	8	66.7									13
43 Occupational Therapy (43x)	30	28	87.5													2
44 Speech-Language Pathology (44x)	6	6	50.0													
Actual visits in report	3,848	3,273	37.4	251	5.5	113	59.8	45	0.2	27	30.7	20	0.0	14	14.0	105
Actual unclassified visits	4,132	3,412	53.9	304	8.0	153	83.6	53	0.5	51	81.0	43	0.3	44	42.3	72
Actual total visits	7,980	6,685	42.0	555	6.7	266	70.6	98	0.3	78	51.7	63	0.0	58	28.4	177
ED visits admitted; not included	78	71	24.1	2	1.1					3	21.4					2

20077 is Harper, KS
40003 is Alfalfa, OK

20007 is Barber, KS
20173 is Sedgwick, KS

40053 is Grant, OK
40151 is Woods, OK

20191 is Sumner, KS
Other is All other counties



Anthony Medical Center - KS

OP TOT223E - 2011
Annual
Hospital - 171346

Total Outpatient Visits and Market Share by Revenue Category and Patient County Code

Revenue Category	Total Visits	20077 Visits	%	20007 Visits	%	40053 Visits	%	40003 Visits	%	20095 Visits	%	40151 Visits	%	20173 Visits	%	All Other Visits
1 Emergency Dept (45x)	760	648	25.7	22	1.8	16	45.7	9	25.7	3	0.1	7	21.2	18	0.0	37
2 Surgery (36x, 49x)	109	89	26.9	11	2.6	1	10.0	2	15.4	1	0.2	2	7.1	3	0.0	
3 Observation (762)	60	49	20.9	1	0.7	1	25.0	3	60.0	1	0.3			3	0.0	2
11 Radiology-Diag (32x ex 322&323)	882	753	29.8	29	1.9	28	56.0	13	37.1	9	0.4	9	27.3	10	0.0	31
15 CT Scan (35x)	163	136	24.2	17	3.7	4	40.0			1	0.1	1	7.1	1	0.0	3
16 Mammography (401, 403)	200	167	60.3	10	41.7	14	73.7			2	0.5	1	33.3	1	0.0	5
17 Ultrasound (402)	69	56	14.3	6	3.7	1	12.5	1	33.3			1	20.0	1	0.0	3
19 Magnetic Resonance Tech (61x)	84	71	28.9	3	1.7	1	25.0	2	66.7	1	0.4	1	33.3	1	0.0	4
21 Chemotherapy (33x excl. 333)	8	2	66.7	5	50.0											1
23 Pulmonary Function (46x)	18	14	26.9	2	4.7	1	50.0			1	1.1					
35 Treatment Room (76x excl. 762)	414	321	49.7	32	7.3	24	85.7	15	79.0	8	0.3	2	20.0	7	0.0	5
36 Respiratory Services (41x)	20	20	20.4													
37 EKG/ECG (73x)	271	230	34.7	11	2.7	6	42.9	4	33.3	3	0.5	3	30.0	2	0.0	12
38 Cardiology (48x excl. 481-483)	76	65	52.0	1	2.0	4	100.0	1	50.0	1	0.6	1	50.0			3
42 Physical Therapy (42x)	245	227	46.8	7	1.4	6	54.6			3	1.3					2
43 Occupational Therapy (43x)	10	8	47.1													2
44 Speech-Language Pathology (44x)	2	2	20.0													
Actual visits in report	2,698	2,284	32.0	130	3.0	91	61.5	32	34.8	28	0.3	21	21.7	31	0.0	81
Actual unclassified visits	3,537	2,970	45.9	223	6.7	138	85.7	66	84.6	30	0.7	30	44.1	18	0.1	62
Actual total visits	6,235	5,254	38.6	353	4.6	229	74.1	98	57.7	58	0.4	51	30.9	49	0.0	143
ED visits admitted; not included	93	84	41.2	2	1.6	4	40.0					2	12.5			1

20077 is Harper, KS
20095 is Kingman, KS

20007 is Barber, KS
40151 is Woods, OK

40053 is Grant, OK
20173 is Sedgwick, KS

40003 is Alfalfa, OK
Other is All other counties



Harper Hospital District No. 5 - KS

OP TOT223E - 2009
Annual
Hospital - 171366

Total Outpatient Visits and Market Share by Revenue Category and Patient County Code

Revenue Category	Total Visits	20077 Visits	%	20191 Visits	%	20095 Visits	%	20173 Visits	%	20007 Visits	%	40053 Visits	%	20151 Visits	%	All Other Visits
1 Emergency Dept (45x)	2,255	1,748	60.4	285	4.7	85	2.9	35	0.0	12	1.0	5	9.8	4	0.1	81
2 Surgery (36x, 49x)	53	46	12.4	6	0.4	1	0.1									
3 Observation (762)	175	145	49.0	16	1.8	4	0.8	3	0.0	2	2.0			1	0.6	4
11 Radiology-Diag (32x ex 322&323)	1,889	1,506	52.0	209	3.5	77	3.0	27	0.0	12	0.7	12	21.4	3	0.2	43
15 CT Scan (35x)	405	320	44.4	40	2.1	15	1.9	11	0.0	1	0.2	3	15.0			15
17 Ultrasound (402)	241	185	46.3	27	2.0	15	3.9	3	0.0	5	3.4					6
19 Magnetic Resonance Tech (61x)	188	146	51.4	27	3.6	6	3.0	3	0.1			1	12.5	2	4.0	3
25 Stress Test (482)	1	1	11.1													
28 G.I. Services (75x)	139	113	91.9	11	8.5	11	40.7	1	0.1	1	10.0	2	100.0			
34 Rural Health - Clinic (521)	14	12	100.0	1	100.0	1	100.0									
35 Treatment Room (76x excl. 762)	580	469	34.8	66	2.7	16	1.2	7	0.0	3	0.7	5	19.2	6	1.7	8
36 Respiratory Services (41x)	98	70	48.6	18	5.1	2	1.7	1	0.0	1	2.4			1	7.7	5
37 EKG/ECG (73x)	390	330	46.0	30	2.1	11	1.6	9	0.0	2	0.4	1	6.3	2	0.4	5
38 Cardiology (48x excl. 481-483)	96	77	51.7	12	6.7	5	1.9	1	0.0	1	1.8					
39 Sleep Lab (HCPC 95805-95811)	19	18	85.7					1	0.5							
42 Physical Therapy (42x)	417	364	50.2	23	3.5	23	6.8	1	0.0			1	8.3			5
44 Speech-Language Pathology (44x)	1	1	8.3													
Actual visits in report	5,121	4,104	46.8	555	2.9	211	2.5	69	0.0	33	0.7	20	10.6	13	0.3	116
Actual unclassified visits	2,844	2,422	38.2	176	1.7	123	2.4	37	0.2	16	0.4	13	7.1	2	0.3	55
Actual total visits	8,953	7,327	46.1	826	2.8	376	2.8	119	0.1	59	0.7	38	10.1	16	0.3	192
ED visits admitted; not included	136	108	36.6	18	2.4	7	3.3	1	0.0			1	4.8			1

20077 is Harper, KS 20191 is Sumner, KS 20095 is Kingman, KS 20173 is Sedgwick, KS
20007 is Barber, KS 40053 is Grant, OK 20151 is Pratt, KS Other is All other counties



Harper Hospital District No. 5 - KS

OP TOT223E - 2010
Annual
Hospital - 171366

Total Outpatient Visits and Market Share by Revenue Category and Patient County Code

Revenue Category	Total Visits	20077 Visits	%	20191 Visits	%	20095 Visits	%	20173 Visits	%	20007 Visits	%	40053 Visits	%	20009 Visits	%	All Other Visits
1 Emergency Dept (45x)	2,200	1,630	62.0	276	4.6	132	4.2	58	0.0	17	1.2	8	14.3	3	0.0	76
2 Surgery (36x, 49x)	29	18	5.8	5	0.4	2	0.3	2	0.0							2
3 Observation (762)	209	171	59.0	12	1.2	13	2.5	7	0.1	1	0.7					5
11 Radiology-Diag (32x ex 322&323)	1,814	1,413	52.3	170	3.1	129	5.3	40	0.1	18	1.1	8	11.9	3	0.0	33
15 CT Scan (35x)	374	304	48.6	33	1.8	13	1.9	12	0.0	1	0.2	1	7.1	1	0.0	9
17 Ultrasound (402)	212	160	41.5	27	2.0	10	2.7	6	0.0	3	1.7	1	11.1			5
19 Magnetic Resonance Tech (61x)	190	155	53.8	20	2.9	9	4.4	3	0.1							3
25 Stress Test (482)	8	7	38.9	1	1.8											
28 G.I. Services (75x)	150	120	89.6	20	11.7	6	31.6	2	0.1	2	22.2					
34 Rural Health - Clinic (521)	170	130	100.0	29	100.0	6	100.0			2	50.0	3	100.0			
35 Treatment Room (76x excl. 762)	285	225	31.2	27	1.2	22	1.2	6	0.0	2	0.3					3
36 Respiratory Services (41x)	101	83	64.3	6	1.8	4	3.9	3	0.1	1	2.9					4
37 EKG/ECG (73x)	391	313	43.7	28	1.9	24	3.5	6	0.0	5	1.0	3	16.7	1	0.0	11
38 Cardiology (48x excl. 481-483)	77	58	38.9	8	5.5	6	3.1	1	0.1	1	1.2	1	16.7			2
39 Sleep Lab (HCPC 95805-95811)	7	5	50.0	1	16.7			1	33.3							
42 Physical Therapy (42x)	249	213	45.8	15	2.6	11	3.8	1	0.0	1	0.1	3	25.0			5
44 Speech-Language Pathology (44x)	11	10	62.5	1	2.1											
Actual visits in report	4,623	3,564	48.2	519	2.8	268	3.1	96	0.0	38	0.7	20	10.3	5	0.0	113
Actual unclassified visits	3,986	3,263	47.0	337	3.2	230	4.3	58	0.4	35	0.8	21	10.6	4	0.0	38
Actual total visits	8,609	6,827	47.6	856	3.0	498	3.5	154	0.1	73	0.8	41	10.5	9	0.0	151
ED visits admitted; not included	40	34	15.5			5	1.7									1

20077 is Harper, KS 20191 is Sumner, KS 20095 is Kingman, KS 20173 is Sedgwick, KS
20007 is Barber, KS 40053 is Grant, OK 20009 is Barton, KS Other is All other counties



Harper Hospital District No. 5 - KS

OP TOT223E - 2011
Annual
Hospital - 171366

Total Outpatient Visits and Market Share by Revenue Category and Patient County Code

Revenue Category	Total Visits	20077 Visits %	20191 Visits %	20095 Visits %	20173 Visits %	20007 Visits %	40053 Visits %	20143 Visits %	All Other Visits
1 Emergency Dept (45x)	1,983	1,572 62.4	184 3.0	96 3.0	44 0.0	13 1.1	8 22.9	1 0.1	65
2 Surgery (36x, 49x)	33	28 8.5	2 0.1	2 0.3				1 0.5	
3 Observation (762)	145	111 47.2	13 1.5	12 3.6	3 0.0				6
11 Radiology-Diag (32x ex 322&323)	1,760	1,406 55.6	164 3.0	99 4.1	30 0.0	8 0.5	8 16.0	1 0.1	44
15 CT Scan (35x)	321	259 46.0	31 1.6	15 2.0	7 0.0	1 0.2			8
17 Ultrasound (402)	168	141 36.1	13 0.9	7 1.9	3 0.0	2 1.2	1 12.5		1
19 Magnetic Resonance Tech (61x)	151	122 49.6	23 3.3	2 0.9	2 0.0	2 1.1			
25 Stress Test (482)	8	6 75.0	2 3.1						
28 G.I. Services (75x)	124	100 87.7	16 9.1	4 28.6	2 0.1			1 1.2	1
34 Rural Health - Clinic (521)	152	133 100.0	12 92.3	3 100.0	2 11.8		1 100.0		1
35 Treatment Room (76x excl. 762)	215	178 27.6	14 0.6	14 0.6	3 0.0				6
36 Respiratory Services (41x)	70	58 59.2	5 1.7	4 3.3			1 100.0		2
37 EKG/ECG (73x)	359	292 44.1	36 2.4	14 2.1	3 0.0	1 0.3	2 14.3		11
38 Cardiology (48x excl. 481-483)	63	43 34.4	13 10.0	5 3.2					2
42 Physical Therapy (42x)	281	231 47.6	25 4.0	9 3.9	1 0.0	11 2.3	2 18.2		2
44 Speech-Language Pathology (44x)	8	5 50.0	1 2.0	1 10.0		1 100.0			
Actual visits in report	4,344	3,496 48.9	419 2.3	215 2.4	75 0.0	32 0.8	17 11.5	3 0.1	87
Actual unclassified visits	3,715	2,985 46.1	394 3.4	194 4.4	43 0.3	43 1.3	12 7.5	15 1.2	29
Actual total visits	8,059	6,481 47.6	813 2.7	409 3.0	118 0.0	75 1.0	29 9.4	18 0.3	116
ED visits admitted; not included	26	21 10.3	2 0.3	1 0.3					2

20077 is Harper, KS 20191 is Sumner, KS 20095 is Kingman, KS 20173 is Sedgwick, KS
20007 is Barber, KS 40053 is Grant, OK 20143 is Ottawa, KS Other is All other counties

Town Hall Attendees Notes & Feedback

[VVV Research & Development INC]

Community Health Needs Assessment Harper County, KS (Town Hall Feedback Cards - Health Strenghts)			
CODE1	CODE2	CODE3	Today: What are the strengths of our community that contribute to health ?
ACC	EMER		Access to trauma care 24/7
ACC			Availability and access
AIR	NUTR	PROV	Fresh air; can grow own food; rural; good health care
AIR	NUTR	SUP	Fresh Air; gardening / fresh foods; community support
CARD	RAD	SUR/EMS	Visiting cardiologist twice a month; CT/MRI; weekly surgical consult; 24 hr. paramedic
CARE	QOL	NH	Caring caregivers; quality of life; retirement assisted living
CARE	EMER		Caring Doctors / Physician Assistants; 24 hour ER, hospital available for immediate care
CARE			Good caring people in work place
CARE	ACC	FAC/DOH	Personalized care; access to care (proximity); facilities; health department
CARE	FAC	SEN/PHY	We have people that care about health care; continually updating facilities; well staffed; good care for seniors; good physical- therapist
DOCS			Doctors available
DOCS	EMS	PROV	Good Doctors and Pas; good EMTs; 2 hospitals
DOH			Good health department that works with hospitals
DOH	FAC		Strong health department; well equipped hospitals clinics
EMS	SPEC		24 hr. ambulance; out-of-town specialists that come to see patients in county
EMS			24 EMT
EMS	SPEC	RAD	24 hour paramedics; services/specialists; CT/MRI
EMS			911; EMT
EMS	WELC	PROV/NH/TRAMS/PHAR/RAD	Our ems service; wellness centers; home health; 24 health care; long term; summer food program; good hospitals and senior facilities; public transportation; pharmacies; CT services; stroke ready
EQP	PROV	DOCS/WELC/NUTR	Up to date equipment; 2 good hospitals; good dedicated practitioners; wellness centers, church sponsored summer programs
FAC	CARE	BRD	Building improvements at hospital; new improved hospital health areas; active concerned boards
FAC	EMS		Good facilities; 24 EMS service
HH	QOL	DOCS	Home care; good quality of life; good doctors
NUTR	QOL	PROV/PHY	Food service for kids; quality of life; choice in healthcare provides; good Physical Therapy departments
PREV	EMER		Emergency care; preventative health care
PROV	EMS		2 good critical access hospitals; 24 hour EMT
PROV	DOH		2 CAH hospitals in the county; good public health
PROV	WELC	DOH/CARE	2 hospitals, 3 wellness centers, good health department; caring dedicated professionals
PROV	NH	EMS/FIRE/EDU	2 staffed hospitals' nursing homes; EMS; fire department; education
PROV	ACC		Abundance of practitioners; timely service
PROV	CARE		Availability if health care; providers – experienced and caring; organizations work together; current employment
PROV	CARE		Care givers in the area; people who do care
PROV	DOCS	SUP/NUT	Excellent hospitals and physicians; good family support; senior citizen meals
PROV	CAR	TRANS/NUTR/WELC	Most services are available; friendly staff; public transportation; summer lunch program; wellness centers in 3 major towns; caring caregivers
PROV	WELC	WELL	Quality health care providers; wellness centers in 2 communities; breast feeding support and classes
QOL	SUP	PROV/ACC/DOCS/EMS/NUTR	Good quality of life; community support; close hospitals; timely service; a large amount of physicians; good EMS; summer food program by church

Community Health Needs Assessment			
Harper County, KS (Town Hall Feedback Cards - Health Strenghts)			
CODE1	CODE2	CODE3	Today: What are the strengths of our community that contribute to health ?
QOL	PROV	WELC/SUP	Quality of life; quality of health care providers; variety of choice for health care providers; access to wellness facilities; good family support; all volunteer
QOL			Standard of living
REC	WELC	QOL/CARE	Good summer programs for kids; wellness centers; quality of life; friendly staff
REC	PROV	FAC/NH/AIR/QOL/DOH/TRANS	Money available for recreation; solid health care base, infrastructure and hospitals in place, nursing facilities; clean air; quality of life; multiple provides. Public health care transportation
RMS	DOCS	WELC	2 Good Hospitals; Good doctors and Pas; dentists available, eye doctors and chiropractors; wellness centers
SNUR	PROV		Health service screenings provided by schools; two hospitals
STRKR	SPEC	MANG	Stroke ready classification; specialty clinics; quality physician management; upgraded services
WELC	NUTR	EYE	Three wellness centers – zumba / water aerobics; eye checks at schools; summer food program
WELC	PROV		Wellness center; good providers
WELC	PROV	EMER/PHAR/DENT/EYE/DOH	Wellness centers; 2 hospitals/ ER; pharmacies; dentists/eye doctors; 24 hour ER; health department
WELC	ECON		Wellness centers; oil and gas brings jobs
WELC	SPEC		Wellness centers; specialty clinics for larger area doctors

Community Health Needs Assessment			
Harper County, KS (Feedback Cards -Things to improve/Change)			
CODE1	CODE2	CODE3	Are there healthcare services in your community / neighborhood that you feel need to be improved and / or changed?
AMB	EMS		Closer 24 hour ambulance; more EMTs
BH	TRAN		Access to mental health services – group home environment; transportation of patients from hospitals to home
BH	TRAN	COOP	Access to mental health services; group home/ mentally ill housing; transportation services in evening better communication between facilities – offer same services and towns are seen as in competition
BH			Behavior health; rehab and counseling
BH	TRAN	EMS/EMER/COOP	More access to mental health services; rehabilitation (supervised) housing for mentally ill persons – somewhat independent but require guidance and help coping day to day; transportation to assist patients; EMS 24/7 to continue; updated ER; cooperation between county entities
COOP	OBG	TRAU/BH/EMS	Both hospitals need to have different strengths; need a hospital to have obstetrical care; need a hospital with trauma services need mental health services; need a facility for mental health people; maintaining 24 hour ambulance coverage
COOP			Combining hospitals; CMMS get out of our hair; stop duplication of services at hospitals
COOP	ECON		County needs to work together more effectively; need more job opportunities with benefits and better pay that are non-agriculture or industrial
COOP			County working together; do away with mandates – let doctors do their jobs
COOP	WELL	INSU	Facilities working together; education regarding public services; more possibilities for insurance coverage
COOP	REF		Health organizations need to coordinate services better; number of residents seeking health care elsewhere
COOP	TRAN		Hospital cooperation; transportation after emergency services
COOP	PHY	CHUR	Hospitals and community working together better; physical therapy on weekends; bring rehab back to county; get churches involved in Health care
COOP	NUTR	POV/BH/REC/ALC	Lack of cooperation between hospitals; attitudes toward poor, migrants entitlements; better affordable access healthy food; education, drinking, foods; recreation programs; behavioral health services
COOP	EYE	AIR/VACC/REC/D RGT	More complementary services between hospitals and care providers; vision (glasses) for older adults – affordability; environmental health (spraying); to children with shots; EMT and dispatch training (i.e. roads); stop competition between hospitals – equality for all – not just one town; more doctors. Kid activities in county; drug testing prior to free/reduced services
DIAL	REF	HH/TRANS/RAD	Kidney dialysis (probably too expensive); increase in funding for care so elders can stay at home especially ambulatory; elders need meds /foods/showers / cleaning; maybe in-home assistance 24 hours /day; medical transportation in addition to what our county offers: mobile radiation or same day analysis
DOCS	WELL	EYE/LANG/EMS/KID/BH/PHY	Need more doctors not just Pas; more education on not smoking or drinking – especially for children and young adults – some incentives; more heart healthy information – classes or activities; glasses for elderly; more food for poverty – food bank; EMTs and dispatches need training on county locations; need Spanish speaking provides in health care facilities; mentally ill housing; day care; physical therapy 7 days / week
DOCS	OBG	PNEO/FIT/NUTR	Too few physicians; too many patients have to be transferred to Wichita for treatment; no deliveries (babies) in Harper Co; Low birth weights low first trimester health care; no walking / bike paths; very few fruits and vegetables in Attica Grocery Store – none in the other small cities
EMER	BH	REC/KID/COOP	Centrally located emergency service since staffing is an issue; affordable behavior health – mental, rehab; summer recreation programs – not only sports but art, craft, etc.; year round pool available; after school programs; lack of cooperation of services – referrals
EMS			EMS situation; conflicts between communities
EMS	COOP		EMS; county wide equality – not just one town getting everything
EMS			EMT

Community Health Needs Assessment			
Harper County, KS (Feedback Cards -Things to improve/Change)			
CODE1	CODE2	CODE3	Are there healthcare services in your community / neighborhood that you feel need to be improved and / or changed?
EMS	SPEC	INSU	Lack of ambulance/EMTs; better variety of specialty services; better nursing ;high percent on Medicare
EMS	LANG	COOP	Lack of EMS/ambulance; quality nursing personnel to handle non-English speaking patients; hospitals need to work together
EMS	DOCS		More EMTs; at least more M.D.s
EYE	FOOD	VACC/AIR	Glasses available for adults – no charge (lions club); more awareness of food banks; see that each child gets shots; ambulance response times; spray fuel – air
H2O	AIR	SMOK/ALCU/TRA F	Possible poor water; extra accidents for more activity; too much spraying crops; not enough activity to keep kids from drinking and smoking
H2O	INSU	ECON/HOUS	Water; number of uninsured; taxes; housing
INSU	COOP	MARK	Better funding from Medicare/Medicaid; more cooperation between hospitals; improve PR and keep patients in county
KID	PAR		Adequate childcare programs after school; culture/family structure
MAMO	PNEO	TRANS/FIT/WEL L/VACC/BH	Availability of mammograms; initiate prenatal care in first trimester (transfer OB Care); transportation availability; increase physical activities (advertise, awareness); increase lead testing awareness; incentives/convenience of flu vaccines; support groups (inadequate social support)
MAMO	PNEO	SMOK/INSU/COO P/REF	Mammogram screening improvement; prenatal care; smoking prevention; Medicare (better pay); better referral between facilities; keep people in county for services
NUTR	POV	INSU	Better diet – decrease junk food; educate on balanced nutritional benefits; decrease poverty; increase insurance coverage
NUTR	COOP	PNEO/POV/SPEC /EMS/INSU/REF/ BH/ENVR/PAR	Better eating habits; share facilities/equipment between hospitals; prenatal care; decreases poverty; gout pay = expenses; offer more specialty clinics, EMS, uninsured; transfers – can we keep more; mental health issues; families; environmental
NUTR	FIT	BH/H2O	Weight control; fitness; mental service improvements; water quality improvement
OBG	PNEO	MAMO/FIT	Access to an OB/GYN for prenatal doctor appointments in the county even if the still need to go out of county to deliver; early detection screening access for free mammograms; physical activity promotion (sidewalks on main streets)
PEDS	COOP	KID	Provide services to infants and children by family doctor (doesn't have to be Peds); works to provide more services between all entities and not duplicate services; daycare (not entirely health care related, but has an effect)
PHY	DIAL	WELL/OBES/SM OK/FIT/BH/LANG /LUNC/OBG	Physical therapy seven days /week; kidney dialysis; obesity, tobacco use, inactivity; social support – behavioral health; better referrals between facilities; providers that can speak Spanish; healthy school lunch programs, OBGYN in Harper
PHY	DIAL	ONC	Rehab for surgery; specialties dialysis and cancer care
PNEO	WELL	BH	Education regarding the importance of prenatal care; improved mental health services
POV	INSU	BRST/HRT	Reduce poverty; increased insured; increase breast feeding; decrease cardiovascular deaths; reduce injuries
PREV	KID		Preventative care programs; Family care – small children
PRIM	INSU	REF/POV/SPEC	More primary care providers; uninsured; patients going out of county; people living below poverty level; community attitude specialized physicians coming to community
REC	BH	PHY/PAR	Physical activity – lighted walking path; behavioral health counselors and rehabilitation services; parenting family
REF			Keep patients at home in hospital unless absolutely need to go to Wichita
REF	COOP	EMS/MARK	Keep patients in county; not exclude either hospital at any time; more cooperation between hospitals; better response time on ambulances; PR need improved
REF	POV	BH/LANG/OBG/A IR/PHY	Need more admissions and not so many transfers out of county; poverty levels of children more mental health services; need better language interpreters; more OBGYN care; crop spraying; physical therapy

Community Health Needs Assessment			
Harper County, KS (Feedback Cards -Things to improve/Change)			
CODE1	CODE2	CODE3	Are there healthcare services in your community / neighborhood that you feel need to be improved and / or changed?
REF	ACC	WELL	Sending too many out of the county for health care, need later clinic hours versus ER visits, promote better health
REF	FIT	H2O/VACC	The number of people that go out of town for health care; inactivity (change upward to help heart, diabetes care, etc); water quality; number of people that take flue shot
SPEC	OBG	PNEO	Access to specialists for those over 65; OBGYN/ prenatal care
SPEC	CHEM	FAC/COOP	More specialty services; Chemotherapy; Improve the physical plants; more Harper / Anthony cooperation
SPEC	CANC		Specialty services and cancer treatment in the community
SUR	EYE	EMS/KID/BH	Local surgeons on staff not just on call; glasses for elderly; EMT- location training; countywide equality (not Harper OR Anthony); more behavioral services; day care
WELL	LUNC		Encourage healthy habits – exercise, diabetes awareness weight loss options/education, preventive care; school lunches to not fit the 'my plate' initiative from USDA
WELL	NUTR	PAR	More health education for families; develop appropriate diets – education for parents when they should feed babies certain table foods – feeding too soon; car seat safety
WELL			Raise public awareness of poor health choices and their consequences– need to become a more healthy community

Hospital / City: _ Harper County KS Community CHNA Roundtable Meeting Suggested Community members & organizations when forming a CHNA collaborative work group.

Date	Community			
	Name	Title	Organization	Address/City/ST/Zip
A) Consumers GENERAL				
Uninsured/underinsured people.				
Members of at-risk populations.				
Parents, caregivers and other consumers of health care in the community.				
Consumer advocates.	Lori Meyer	Advocate	Sexual Assault/DVC	
Consumer advocates.	Lynn Seifert	Advocate	TFI Family Services	
Consumer advocates.				
B) Community leaders and groups				
The hospital organization's board members.	Pat Kerschen	Chairman	Harper Hospital	1409 Central, Harper, KS
The hospital organization's board members.	Lisa Mathes	vice-chairman	Harper Hospital	1422 Central, Harper, KS
The hospital organization's board members.	Jeri Patterson	secretary	Harper Hospital	296 W HWY 160, Harper, KS
The hospital organization's board members.	Bob Hightree	treasurer	Harper Hospital	880 NE 30 Ave; Harper, KS
The hospital organization's board members.	Greg Bauer	member at large	Harper Hospital	263 NE 150 Rd; Harper, KS
The LHD organization's board members.	Jerry Turner	member at large	HCHD/HCHHA	271 SE 20 Ave., Anthony, KS 67003
The LHC organization's board members.	Frieda Schmidt	member at large	SKCPH Region	979 SE 10 RD, Freeport, KS 67049
Local clergy and congregational leaders.	Kent Olds	Minister	Assembly of God	402 N. Kansas, Anthony, KS 67003
Local clergy and congregational leaders.	Jim Anderson	Minister	Nazarene Church	114 E. Grant, Anthony, KS 67003
Local clergy and congregational leaders.	Alan Stucky	Minister	Pleasant Valley Menn	1020 E. 14th, Harper, KS 67058
Local clergy and congregational leaders.				
Presidents or chairs of civic or service clubs -- Chamber of Commerce, veterans' organizations, Lions, Rotary, etc.	Rick Podschun	President	Kiwanas	295 SE 10 RD, Anthony, KS 67003
Presidents or chairs of civic or service clubs -- Chamber of Commerce, veterans' organizations, Lions, Rotary, etc.	Gwen Warner	Director	Anthony Chamber of C	227 W. Main, Anthony, KS 67003
Representatives from businesses -- owners/CEO's of large businesses (local or large corporations with local branches.)	Tim Penner	CEO	Harper Industries	815 NW 4 Ave., Harper, KS 67058
Representatives from businesses -- owners/CEO's of large businesses (local or large corporations with local branches.)	Tom Conrady	Owner	Prairie Land Partners	855 S. Hwy 179, Anthony, KS 67003
Representatives from businesses -- owners/CEO's of large businesses (local or large corporations with local branches.)	Steve Bellesine	Owner	Central Electropolishir	200 Cattail Cove Circle, Anthony, KS 67003
Representatives from businesses -- owners/CEO's of large businesses (local or large corporations with local branches.)	Teresa Hetrick	Employee	Shell Oil	
Representatives from businesses -- owners/CEO's of large businesses (local or large corporations with local branches.)	Freddy Foster	Employee	Shell Oil	
Business people and merchants (e.g., who sell tobacco, alcohol, or other drugs).	Troy Atkins	Manager	Gene's Heartland Foo	1114 N. Springfield, KS 67003
Business people and merchants (e.g., who sell tobacco, alcohol, or other drugs).	Larry Olds	Owner	Larry's Hometown Mar	318 E. Vine, Anthony, KS 67003
Business people and merchants (e.g., who sell tobacco, alcohol, or other drugs).		Owner	Anthony Liquor Store	511 N. LL&G Ave., Anthony, KS 67003
Business people and merchants (e.g., who sell tobacco, alcohol, or other drugs).		Owner	Johnson Liquor Store	601 W. 14th, Harper, KS 67058
Business people and merchants (e.g., who sell tobacco, alcohol, or other drugs).		Owner	SPK Grocery Inc.	406 E. 14th, Harper, KS 67058
Business people and merchants (e.g., who sell tobacco, alcohol, or other drugs).	Bob & Roxanne C	Owner	Fence Post Supper Cl	700 E. 14th, Harper, KS 67058
Business people and merchants (e.g., who sell tobacco, alcohol, or other drugs).			Cancun	725 W. Main, Anthony, KS 67003
Business people and merchants (e.g., who sell tobacco, alcohol, or other drugs).			Dark's Landing	137 W. Ave. C., Attica, KS 67009
Representatives from organized labor.				
Political, appointed and elected officials.	Jim Gates	County Commissi	Harper County	32 W. Anthony Lake Rd, Anthony, KS 67003
Political, appointed and elected officials.	Lee Adams	Chair County Com	Harper County	1067 NE 10 RD, Freeport, KS 67049
Political, appointed and elected officials.	Carla Pence	County Commissi	Harper County	375 NE 50 RD, Harper, KS 67058
Political, appointed and elected officials.	Larry Claffin	City Commissione	City of Anthony	702 N. Franklin Ave., Anthony, KS 67003
Political, appointed and elected officials.	Rory Pugh	City Commissione	City of Harper	
Political, appointed and elected officials.	Mike Loreg	City Commissione	City of Attica	120 N. Kiowa, Attica, KS 67009
Political, appointed and elected officials.	Megan Ferrell	Extension Office	K-State Research & E	201 N. Jennings, Anthony, KS 67003
Political, appointed and elected officials.	Vince Wetta	State Rep.	80th District	1204 N. Poplar, Wellington, KS 67152
Political, appointed and elected officials.	Kyle Hoffman	State Rep.	116th District	1318 Avenue T, Coldwater, KS 67029
Political, appointed and elected officials.	Ruth Teichman	State Senator	District 33	434 E. Old Highway 50, Stafford, KS 67578
Political, appointed and elected officials.	Brad Moore	Sheriff	HC Sheriff	115 E. Steadman, Anthony, KS 67003
Political, appointed and elected officials.	John Mclure	HC Road & Bridge	Director	1704 Central, Harper, KS 67058

Hospital / City: _ Harper County KS Community CHNA Roundtable Meeting Suggested Community members & organizations when forming a CHNA collaborative work group.

Date	Community			
	Name	Title	Organization	Address/City/ST/Zip
Political, appointed and elected officials.	Rhonda Berry	HC Register of Deeds	Register of Deeds	920 E. Main, Anthony, KS 67003
Political, appointed and elected officials.	Kyle Clark	HC SCLEPG	Sanitarian	1138 E. Main, Anthony, KS 67003
Political, appointed and elected officials.	Laurel McClellan	HC Attorney Office	HC Attorney	P. O. Box 453, Anthony, KS 67003
Political, appointed and elected officials.	CJ Downing	HC Community Se	Director	201 N. Jennings, Anthony, KS 67003
Political, appointed and elected officials.	Kristie Clark	HC Human Resou	Director	201 N. Jennings, Anthony, KS 67003
Political, appointed and elected officials.	Leroy Godfrey	HC Solid Waste	Director	1101 N. Anthony Ave., Anthony, KS 67003
Political, appointed and elected officials.	Mildred Metzger	HC Treasurer	HC Treasurer	201 N. Jennings, Anthony, KS 67003
Political, appointed and elected officials.	Greg Barlow	HC Noxious Weed	Director	121 W. Hwy 2, Anthony, KS 67003
Foundations.	Dollie Mathes	Chairperson	Harper County Comm	545 NW 60 Ave., Harper, KS 67058
Foundations.	Michelle Fehring	Assistant	Harper County Comm	P. O. Box 111, Attica, KS 67009
United Way organizations.				
People without titles, but identified by others as "community leaders."	Alan Allenbach	Banker	Citizens Community B	302 E. Ave. F, Attica, KS 67009
People without titles, but identified by others as "community leaders."	Kevin Alexander	Banker	Citizens Community B	302 E. Ave. E, Attica, KS 67009
People without titles, but identified by others as "community leaders."	Pat Kerschen	Banker	Freeport State Bank	1409 Central Ave., Harper, KS 67058
People without titles, but identified by others as "community leaders."	Don Jensen	Retired	Retired	423 N. Lincoln Ave., Anthony, KS 67003
People without titles, but identified by others as "community leaders."	Carol Jean Martin	Retired	Retired	1551 NW 40th RD, Attica, KS 67009
People without titles, but identified by others as "community leaders."	Ron Poor	Agent/Consultant	Edward Jones	211 W. Garfield, Anthony, KS 67003
People without titles, but identified by others as "community leaders."	Mary Thomas	Owner/Director	Prairie Rose Funeral H	602 E. Main, Anthony, Ks 67003
People without titles, but identified by others as "community leaders."	Roger McKnight	Business	Couch Abstract	P. O. Box 106, Anthony, KS 67003
People without titles, but identified by others as "community leaders."	Randy & Becky Ne	Business	Newberry Family Auto	W. Hwy 160, Harper, KS 67058
People without titles, but identified by others as "community leaders."	John & Kathy Eck	Business	Eck Agency Inc.	123 N. Main, Attica, KS 67009
People without titles, but identified by others as "community leaders."	Brandon & Brenda	Business	Gerber Auction & Real	323 E. Main, Anthony, KS 67003
People without titles, but identified by others as "community leaders."	Charles & Cheris	Business	Central Energy	816 N. LL&G, Anthony, KS 67003
People without titles, but identified by others as "community leaders."	Kerry Schroeder	Banker	Bank of Kansas	302 S. Jennings, Anthony, KS 67003
C) Public and other organizations				
Public health officials.	Sherry Houston	Administrator	HCHD/HCHHA	P. O. Box 66, Anthony, KS
Public health officials.	Rita Bonetti, APRN	Health Officer	HCHD/HCHHA	P. O. Box 66, Anthony, KS
Public health officials.	Virginia Downing,	Regional Coordin	SKCPH	P. O. Box 124, Anthony, KS 67003
Public health officials.	Cheryl Adelhardt	PIO	HCHD/HCHHA	201 N. Jennings, Anthony, KS 67003
Directors or staff of health and human service organizations.	Megan Gottschalk	Chapter Director	American Red Cross	111 N. Walnut, Suite B, Hutchinson, KS 67501
City/Community planners and development officials.	Amber Kummer	Administrator	City of Anthony	
City/Community planners and development officials.				
City/Community planners and development officials.				
City/Community planners and development officials.				
City/Community planners and development officials.	Al Roder	Administrator	Harper County	
Individuals with business and economic development experience.	Mike Lanie	Director	Economic Development	
Welfare and social service agency staff.	Tamara Woods	Representative	Wichita SRS	P. O. Box 1620, Wichita, KS 67201
Housing advocates - administrators of housing programs: homeless shelters, low-income-family housing and senior housing.				
Education officials and staff - school superintendents, principals, teachers and school nurses.	Joshua Swartz	Superintendent	USD 361	124 N. Jennings, Anthony, KS 67003
Education officials and staff - school superintendents, principals, teachers and school nurses.	Lee Cox	Asst. Superintend	USD 361	124 N. Jennings, Anthony, KS 67003
Education officials and staff - school superintendents, principals, teachers and school nurses.	Sandy Nichols	Principal	Chaparral High School	467 N. St. RD 14, Harper, KS 67058
Education officials and staff - school superintendents, principals, teachers and school nurses.	Lisa Mathes	School RN	USD 361	467 N. St. RD 14, Harper, KS 67058
Education officials and staff - school superintendents, principals, teachers and school nurses.	Bobby Reed	Principal	Anthony Elemetary Sc	215 S. Springfield, Anthony, KS 67003
Education officials and staff - school superintendents, principals, teachers and school nurses.	Annette Marsh	Nurse Para	Anthony Elemetary Sc	215 S. Springfield, Anthony, KS 67003
Education officials and staff - school superintendents, principals, teachers and school nurses.	Bill Giesen	Principal	Harper Elementary Sc	1317 Walnut, Harper, KS 67058

Hospital / City: _ Harper County KS Community CHNA Roundtable Meeting Suggested Community members & organizations when forming a CHNA collaborative work group.

Date	Community			
	Name	Title	Organization	Address/City/ST/Zip
Education officials and staff - school superintendents, principals, teachers and school nurses.	Daquri Gill	Nurse Para	Harper Elementary Sc	1317 Walnut, Harper, KS 67058
Education officials and staff - school superintendents, principals, teachers and school nurses.	Troy Piper	Superintendent/Pr	USD 511	100 W. ave. H, Attica, KS 67009
Education officials and staff - school superintendents, principals, teachers and school nurses.	Amy Loreg	Admin. Asst.	USD 511	718 N. Main, Attica, KS 67009
Education officials and staff - school superintendents, principals, teachers and school nurses.	Monica Holden	Site Director	Anthony Learning Cen	107 W. Main, Anthony, KS 67003
Education officials and staff - school superintendents, principals, teachers and school nurses.		Director	Child Start/Early Head	P. O. Box 545, Anthony, KS 67003
Public safety officials.	Tom Winters	Director	HC Emergency Manag	P. O. Box 52, Anthony, KS 67003
Staff from state and area agencies on aging.	Shirley McCartney	Director	HC Dept. on Aging.	201 N. Jennings, Anthony, KS 67003
Staff from state and area agencies on aging.	Jennifer Robinson	Case Manager	DOA	P. O. Box 603, Conway Springs, KS 67031
Staff from state and area agencies on aging.	Prisca Krehbiel	Case Manager	DOA	3461 SE 120th Street, Rago, KS 67128
Staff from state and area agencies on aging.	Jodi Abington	Executive Director	SCKAAA	304 S. Summit, Arkansas City, KS 67005
Law enforcement agencies - Chiefs of police.	John Blevins	Chief	City of Anthony	202 S. Bluff, Anthony, KS 67003
Law enforcement agencies - Chiefs of police.	Doug Murphy	Chief	City of Harper	10th & Maple, Harper, KS 67058
Law enforcement agencies - Chiefs of police.	Chuck Berry	Chief	City of Attica	101 N. Main, Attica, KS 67009
Local colleges and universities				
Coalitions working on health or other issues.	Jennifer Foley	Member	Harper County Health	1002 Anthony, Anthony, KS 67003
Coalitions working on health or other issues.	Karen Oller	Member	Harper County Health	312 W. 8th, Anthony, KS 67003
Coalitions working on health or other issues.	Joyce Kaup	President	HCICC	11 W. Deer Creek Trail, Anthony, KS 67003
Coalitions working on health or other issues.	Mary Lear	Member	Harper County Health	1102 E. Main, Anthonny, KS 67003
Coalitions working on health or other issues.	Suzanne Clark	Member	Harper County Health	716 N. Madison, Anthony, KS 67003
Coalitions working on health or other issues.	Kasha Moritz	Member	Harper County Health	745 N. St. RD 14, Harper, KS 67058
PRESS (Paper, TV, Radio)	Larry Dunn	Editor	Anthony Republican	P. O. Box 31, Anthony, KS 67003
PRESS (Paper, TV, Radio)	Ken Leu	Editor	Harper Advocate	P. O. Box 36, Harper, KS 67058
PRESS (Paper, TV, Radio)	Mr. & Mrs. Ray Ho	Publishers	Attica Independent	P. O. Box 413, Attica, KS 67009
PRESS (Paper, TV, Radio)	Kate Catlin	Editor	Harper County Herald	P. O. Box 25, Anthony, KS 67003
D) Other providers				
Physicians.	Dr. Stranathan	Physician	Anthony Medical Cent	1101 E. Spring, Anthony, KS 67003
Physicians.	Dr. Imlay	Physician	Harper Hospital	700 W. 13th, Harper, KS 67058
Physicians.	Dr. Bradshaw	Physician	Harper Hospital	700 W. 13th, Harper, KS 67058
Leaders in other not-for-profit health care organizations, such as hospitals, clinics, nursing homes and home-based and community-based services.	Bryant Anderson	CEO	Anthony Medical Cent	1101 E. Spring, Anthony, KS 67003
Leaders in other not-for-profit health care organizations, such as hospitals, clinics, nursing homes and home-based and community-based services.	Kim Cinelli	CEO	Harper Hospital & Clin	700 W. 13th, Harper, KS 67058
Leaders in other not-for-profit health care organizations, such as hospitals, clinics, nursing homes and home-based and community-based services.	Paul Christner	Director	HC EMS	123 N. Jennings, Anthony, KS 67003
Leaders in other not-for-profit health care organizations, such as hospitals, clinics, nursing homes and home-based and community-based services.	Murl Webster	Administrator	Anthony Community C	212 N. Fifth, Anthony, KS 67003
Leaders in other not-for-profit health care organizations, such as hospitals, clinics, nursing homes and home-based and community-based services.	Holly Noble	Administrator	Attica Long Term Care	302 N. Botkin, Attica, KS 67009
Leaders in other not-for-profit health care organizations, such as hospitals, clinics, nursing homes and home-based and community-based services.	Cindy Ash/Melissa	Directors	Country Living AL	420 N. Fifth, Anthony, KS 67003
Leaders in other not-for-profit health care organizations, such as hospitals, clinics, nursing homes and home-based and community-based services.	Kim Cinelli	Director	Heritage Estates	1204 Maple, Harper, KS 67058
Leaders in other not-for-profit health care organizations, such as hospitals, clinics, nursing homes and home-based and community-based services.	Tammy Schienle	Case Manager	ILC Advocacy in Actio	1458 Northwest Parkway, Wichita, KS 67212
Leaders in other not-for-profit health care organizations, such as hospitals, clinics, nursing homes and home-based and community-based services.	Donnie Henning	Case Manager	ILRC	3033 W. 2nd Street N., Wichita, KS 67203
Leaders in other not-for-profit health care organizations, such as hospitals, clinics, nursing homes and home-based and community-based services.	Kim Mies	Case Manager	ILC-SKIL	1801 Main, Parsons, KS 67357
Leaders in other not-for-profit health care organizations, such as hospitals, clinics, nursing homes and home-based and community-based services.	Loretta Kerschen	Director	Harper Wellness Cent	615 W.12th, Harper, KS 67058
Leaders in other not-for-profit health care organizations, such as hospitals, clinics, nursing homes and home-based and community-based services.	Jennifer Wolff	Director	AnthonyWellness Cen	554 NE 20 RD, Anthony, KS 67003

Hospital / City: _ Harper County KS Community CHNA Roundtable Meeting Suggested Community members & organizations when forming a CHNA collaborative work group.

Date	Community			
	Name	Title	Organization	Address/City/ST/Zip
Leaders in other not-for-profit health care organizations, such as hospitals, clinics, nursing homes and home-based and community-based services.	Kyle Clark	Sanitarian	Harper County SLEPG	P. O. Box 406, Anthony, KS 67003
Leaders in other not-for-profit health care organizations, such as hospitals, clinics, nursing homes and home-based and community-based services.	Cheryl Ramer	Social Worker	Harry Hynes Hospice	502 W. 15 Harper, Ks 67058
Leaders from Catholic Charities and other faith-based service providers.				
Mental health providers.	Angela Baker	Therapist	Horizons Mental Health	123 N. Penn, Anthony, KS 67003
Oral health providers.	Amy Walker	Dentist	Walker Family Dental	724 E. Main, Anthony, KS 67003
Oral health providers.	Gregory Kilbane	Dentist	Sunflower Dental of Harper	Hwy 160 & Maple, Harper, KS 67058
Oral health providers.	Anthony Dental	Dentist	Anthony Dental	113 N. Anthony, Anthony, KS 67003
Pharmacy	Joe Brummer	Owner/Pharmacist	Irwin-Potter	P. O. Box 107, Anthony, KS 67003
Pharmacy	Lance & Sloane F	Owner/Pharmacist	Irwin-Potter	P.O. Box 107, Anthony, KS 67003
Pharmacy	Ron Giesen	Pharmacist	Harper Hospital Pharmacy	615 W. 12th, Harper, KS 67058
Health insurers.	Debra Meisenheimer	Representative	BCBS	1 N. Main, Suite 301, Hutchinson, KS 67501
Health insurers.	Kathy Gann	Representative	Children's Mercy	215 W. Pershing, Suite 600, Kansas City, MO 64108
Parish and congregational nursing programs.	Lois Hofmeier	RN	Retired	1524 Central Ave., Harper, KS 67058
Other health professionals.	Dan Gillogly	Optometry	Greene Vision Group	707 W. Main, Anthony, KS 67003

Harper Town Hall Notes 5:30—7:00 pm

WHITE CARD: PARTICIPANT NOTES

In Attendance – 70 (24 Cards, 14 Sheet Additions, 34 Signed In)

- Table 1: 5
- Table 2: 6
- Table 3: 8
- Table 4: 9
- Table 5: 6
- Table 6: 8
- Table 7: 7
- Table 8: 4
- Table 9: 9
- Table 10: 8

In Attendance:

- Providers
- Elected Officials
- Business Owners
- Mothers
- Seniors
- Department of Health
- School Officials
- Clergy
- NO PHARMACY REPRESENTATIVES

Current News/Concerns:

- More traffic because of recent oil and gas activity
- The need for water (high commodity with growing oil industry)
- Water Quality
- Lack of EMTs
- Medicare Funding

Economic Business Trends:

- Employment is going down because of oil and gas.
- DOH managing of WIC

Maternal and Infant Trends:

- No Births in County

Hospitalization / Provider Profiles

- More Traffic accidents

Risk Indicators and Factors:

- Immigrant Population
- Physical inactivity tied to aging population
- Water quality needs to be improved. Air Quality is OK.

Preventative:

- Flu Shot Availability unknown

COMMUNITY PERSPECTIVE QUESTIONS:

QUESTION ONE – QUALITY OF CARE

IN SESSION RESPONSE:

- Score of 1 or 2: 3 or 4 people
- Score of 3: 60+ people
- Score of 4: 2 or 3 people
- Score of 5: 0

CARD TOTALS:

SCORE	TOTAL
1	1
2	5
2.5	4
3	40
3.5	3
4	3

Reasons for 3 rating:

- Things are worse things are better
- Assumptions because we don't have enough facts
- Because the people who are uninsured or on Medicaid aren't in the meeting

QUESTION TWO, PART A: POSITIVES /STRENGTHS

1. Senior Citizen Meals
2. Access to Cardiology/Orthopedics/Urology

3. Harper Community Foundation has money available for grants and recreation
4. Two Pharmacies
5. Quality Health Care Providers
6. Good Family Support (for seniors)
7. Good Senior / Hospital Facilities
8. Good Physical Therapy
9. Good Health Care public transportation
10. Personalized care from providers
11. Great Imaging Services
12. Stroke-ready classification
13. Fire Department
14. Dentists / Eye Doctors
15. Summer Food Program for Kids
16. Good Quality of Life
17. Access to Wellness Facilities
18. Several Choices in long-term care
19. High Quality Health Department
20. 24 hour Paramedic

QUESTIONS TWO, PART B: IMPROVEMENTS / NEEDS FOR CHANGE

1. Mentally ill housing - 3
2. Build family support system for kids – 20
3. Environmental Health - 10
4. OBGYN (Delivery and Prenatal care) - 9
5. School lunches need to be healthier - 8
- More affordable health insurance - 8
6. Heart Disease - 15
7. Senior Care - 1
8. Affordable vision for everyone (Uninsured) - 2
9. Mobile Kidney Dialysis - 11
10. Sex Ed - 2
11. Training for EMT/Dispatches - 26
12. Physical Therapy 7 days/week - 17
13. Alcohol and Drugs (Meth and Marijuana) - 28
14. Day Care - 15
15. Better Referral Between Facilities - 38
16. Providers for Non-English Speakers - 8
17. More Behavior Health - 14

Public Notice & Invitation

[VVV Research & Development INC]

Harper County Health Department to partner with Anthony Medical Center and Harper Hospital District #5 to assess community need

Date: July 5, 2012

For Immediate Release

Media Contact:

Over the next two months, the Harper County Health Department will partner with both Anthony Medical Center and Harper Hospital District #5 to conduct a community health needs assessment. Results of this assessment will provide guidance to address current & future health care needs, as well as fulfill both federal and state healthcare reform mandates.

To gather the necessary information regarding health care perceptions of delivery, access, and health practices, a Town Hall is being organized on Tuesday evening August 14th at Chaparral. More information about the upcoming Town Hall will be released late in July.

Vince Vandelaar MBA from VVV Research & Development INC, an independent health research and consulting firm from Olathe KS, has been retained to conduct and complete this assessment. For further information about this assessment, please call the Harper County Health Department at (620-842-5132)

ANTHONY REPUBLICAN

July 11, 2012

Area Health Centers Partner To Assess Community Need

Over the next two months, the Harper County Health Department will partner with both Anthony Medical Center and Harper Hospital District #5 to conduct a community health needs assessment. Results of this assessment will provide guidance to address current and future health care needs, as well as fulfill both federal and state healthcare reform mandates. To gather the necessary information regarding health care perceptions of delivery, access, and health practices, a Town Hall is being organized on Tuesday even-

ing August 14, at Chaparral. More information about the upcoming Town Hall will be released late in July.

Vince Vandehaar MBA from VVV Research & Development INC, an independent health research and

consulting firm from Olathe KS, has been retained to conduct and complete this assessment. For further information about this assessment, please call the Harper County Health Department at (620-842-5132).

Harper Advocate

7/11/2012

Page 7

Community Health Needs Assessment Is Planned

Over the next two months, the Harper County Health Department will partner with both Anthony Medical Center and Harper Hospital District #5 to conduct a community health needs assessment. Results of this assessment will provide guidance to address current & future health care needs, as well as fulfill both federal and state healthcare reform mandates.

To gather the necessary information regarding health care perceptions of delivery, access, and health practices, a Town Hall is being organized on Tuesday evening August 14th at Chaparral. More information about the upcoming Town Hall will be released late in July.

Vince Vandehaar MBA from VVV Research & Development INC, an independent health research and consulting firm from

Olathe KS, has been retained to conduct and complete this assessment. For further information about this assessment, please call the Harper County Health Department at (620-842-5132).

Harper County Health Department To Partner With Anthony Medical Center And Harper Hospital District #5 To Assess Community Need

Over the next two months, the Harper County Health Department will partner with both Anthony Medical Center and Harper Hospital District #5 to conduct a community health needs assessment. Results of this assessment will provide guidance to address current future health care needs, as well as fulfill both federal and state healthcare reform mandates.

To gather the necessary information regarding health care perceptions of delivery, access, and health practices, a

Town Hall is being organized on Tuesday evening August 14th at Chaparral. More information about the upcoming Town Hall will be released late in July.

Vince Vandehaar MBA from VVV Research & Development INC, an independent health research and consulting firm from Olathe KS, has been retained to conduct and complete this assessment. For further information about this assessment, please call the Harper County Health Department at (620-842-5132).

7/9/12

Harper County Herald

PRESS RELEASE

Date: July 27, 2012

For Immediate Release

Media Contact: Sherry Houston, Harper County Health Department

In order to gauge the overall health needs of Harper County Residents, Harper County Health Department in partnership with Anthony Medical Center and Harper Hospital District 5 cordially invite you to participate in a Community Health Needs Assessment Town Hall roundtable **on Tuesday August 14th from 5:30 to 7 pm at Chaparral High School** - 467 North State Highway 14, Anthony KS 67003.

This event is being held to identify & prioritize the health needs of Harper County residents. Feedback from the event will also serve to fulfill both federal and state mandates. Partial funding for this work comes from an awarded mini-grant from the Kansas Rural Health Options Project, managed by the Kansas Hospital Association / Kansas Hospital Research & Service Foundation.

We encourage your attendance, as your input is very valuable to build a healthy community. A free meal will be served. Vince Vandehaar, principal consultant at VVV Research and Development, Inc. from Olathe, KS has been hired to facilitate this meeting. We look forward to seeing you there.

For more information, please contact Sherry Houston at Harper County Health Department/Harper County Home Health Agency at 620-842-3152.

July 30, 2012

Dear Community Leader:

Harper County Health Department in partnership with Anthony Medical Center and Harper Hospital District 5 are conducting an assessment to understand community health needs and desires for Harper County. Partial funding for this work comes from an awarded mini-grant from the Kansas Rural Health Options Project, managed by the Kansas Hospital Association / Kansas Hospital Research & Service Foundation.

In order to make sure that community members are involved in this process, you are invited to a Town Hall meeting where we will discuss the current health care trends and needs of Harper County, KS. This Town Hall meeting will be an opportunity for you to share your experiences and suggestions to improve health care delivery within Harper County. Harper County Health Department has retained the services of Vince Vandehaar, principal consultant at VVV Research and Development, Inc. from Olathe, KS to facilitate this meeting and report generation.

All Town Hall input will be integrated into a public community health needs assessment report. Please remember that this is your chance to join us for this very important community discussion and tell us what you think. If you are unable to attend please consider sending a representative from your agency. Here are the details for the meeting that we are asking you to attend:

Harper County Health Department Town Hall Meeting:

Where: **Chaparral High School Cafeteria**, 467 North State Highway 14, Anthony KS

When: **Tuesday, August 14th 2012**

Time: **5:30 – 7:00 pm**; light dinner will be provided

If you have any questions, please contact me at 620-842-5132. Again, we look forward to seeing you at this meeting and thank you for your participation.

Sherry Houston, Administrator
Harper County Health Department/Harper County Home Health Agency

Community Health Needs Assessment

Town Hall Meeting

Tuesday, August 14, 2012

5:30 pm to 7:00 pm

Chaparral High School

Sponsored by

Harper County Health Department/Home Health Agency; Anthony Medical Center; and Harper Hospital District # 5

Harper Advocate 8/1/2012

Health Needs To Be Assessed

Harper Advocate 8/1/2012

In order to gauge the overall health needs of Harper County Residents, Harper County Health Department in partnership with Anthony Medical Center and Harper Hospital District 5 cordially invite you to participate in a Community Health Needs Assessment Town Hall roundtable on Tuesday August 14th from 5:30 to 7 pm at Chaparral High School - 467 North State Highway 14, Anthony KS 67003.

This event is being held to

identify & prioritize the health needs of Harper County residents. Feedback from the event will also serve to fulfill both federal and state mandates. Partial funding for this work comes from an awarded mini-grant from the Kansas Rural Health Options Project, managed by the Kansas Hospital Association / Kansas Hospital Research & Service Foundation.

We encourage your attendance, as your input is very valuable to build a healthy

community. A free meal will be served. Vince Vandehaar, principal consultant at VVV Research and Development, Inc. from Olathe, KS has been hired to facilitate this meeting. We look forward to seeing you there.

For more information, please contact Sherry Houston at Harper County Health Department/Harper County Home Health Agency at 620-842-5132.

Use Classifieds!

Page 8

Anthony Republican 8/1/2012

Harper County Health Department To Host Town Hall Roundtable

In order to gauge the overall health needs of Harper County Residents, Harper County Health Department in partnership with Anthony Medical Center and Harper Hospital District 5 cordially invite you to participate in a Community Health Needs Assessment Town Hall roundtable on Tuesday August 14th from 5:30 to 7 pm at Chaparral High

School - 467 North State Highway 14, Anthony KS 67003.

This event is being held to identify and prioritize the health needs of Harper County residents. Feedback from the event will also serve to fulfill both federal and state mandates. Partial funding for this work comes from an awarded mini-grant from the Kansas Rural Health Options Project,

managed by the Kansas Hospital Association / Kansas Hospital Research & Service Foundation.

We encourage your attendance, as your input is very valuable to build a healthy community. A free meal will be served. Vince Vandehaar, principal consultant at VVV Research and Development, Inc. from Olathe, KS has been hired to facilitate this meeting. We look forward to seeing you there.

For more information, please contact Sherry Houston at Harper County Health Department/Harper County Home Health Agency at 620-842-5132.

Health Needs Meeting

In order to gauge the overall health needs of Harper County Residents, Harper County Health Department in partnership with Anthony Medical Center and Harper Hospital District 5 cordially invite you to participate in a Community Health Needs Assessment Town Hall roundtable on Tuesday August 14th from 5:30 to 7 pm at Chaparral High School - 467 North State Highway 14, Anthony KS 67003.

aral High School - 467 North State Highway 14, Anthony KS 67003.

This event is being held to identify & prioritize the health needs of Harper County residents. Feedback from the event will also serve to fulfill both federal and state mandates. Partial funding for this work comes from an awarded mini-grant from

the Kansas Rural Health Options Project, managed by the Kansas Hospital Association / Kansas Hospital Research & Service Foundation.

We encourage your attendance, as your input is very valuable to build a healthy community. A free meal will be served. Vince Vandehaar, principal consultant at VVV Research and Development, Inc. from Olathe, KS has been hired to facilitate this meeting. We look forward to seeing you there.

For more information, please contact Sherry Houston at Harper County Health Department/Harper County Home Health Agency at 620-842-5132.

The August 2, 2012

ATTICA INDEPENDENT

Community Health Needs Assessment Town Hall Meeting

Tuesday, August 14, 2012

5:30 pm to 7:00 pm

Chaparral High School

Sponsored by:

Harper County Health Department/Home Health Agency
Anthony Medical Center
Harper Hospital District # 5

Anthony Republican 8/1/2012



The August 2, 2012

ATTICA INDEPENDENT

Community Health Needs Assessment

Town Hall Meeting

Tuesday, August 14, 2012

5:30 pm to 7:00 pm

Chaparral High School

Sponsored by

Harper County Health Department/Home Health Agency; Anthony Medical Center; and Harper Hospital District # 5

Town Hall Meeting

Tuesday, August 14, 2012

5:30 pm to 7:00 pm

Chaparral High School

Sponsored by

Harper County Health Department/Home
Health Agency; Anthony Medical Center; and
Harper Hospital District # 5

Community Health Needs Assessment

Town Hall Meeting

Tuesday, August 14, 2012

5:30 pm to 7:00 pm

Chaparral High School

Sponsored by

Harper County Health Department/Home
Health Agency; Anthony Medical Center; and
Harper Hospital District # 5

Community Health Needs Assessment

In order to gauge the overall health needs of Harper County Residents, Harper County Health Department in partnership with Anthony Medical Center and Harper Hospital District 5 cordially invite you to participate in a Community Health Needs Assessment Town Hall roundtable on Tuesday August 14th from 5:30 to 7 pm at Chaparral High School - 467 North State Highway 14, Anthony KS 67003.

This event is being held to identify & prioritize the health needs of Harper County residents. Feedback from the event will also serve to fulfill both federal and state mandates. Partial funding for this work comes from an awarded mini-grant from the Kansas Rural Health Options Project, managed by the Kansas Hospital Association / Kansas Hospital Research & Service Foundation.

We encourage your attendance, as your input is very valuable to build a healthy community. A free meal will be served. Vince Vandehaar, principal

consultant at VVV Research and Development, Inc. from Olathe, KS has been hired to facilitate this meeting. We look forward to seeing you there.

For more information, please contact Sherry Houston at Harper County Health Department/Harper County Home Health Agency at 620-842-5132.

Community Health Needs Assessment Town Hall Meeting

Tuesday, August 14, 2012

5:30 pm to 7:00 pm

Chaparral High School

Sponsored by

Harper County Health
Department/Home
Health Agency; Anthony
Medical Center; and Harper
Hospital District # 5

Your ad could

Harper County Herald

Monday, August 6, 2012

Community Health Needs Assessment

Town Hall Meeting

Tuesday, August 14, 2012

5:30 pm to 7:00 pm

Chaparral High School

Sponsored by:

Harper County Health Department/Home Health Agency
Anthony Medical Center Harper Hospital District # 5

*Anthony
Republican*

Harper County Community Health Needs Assessment Town Hall draws large turnout

Date: August 17, 2012

For Immediate Release

Media Contact:

Harper County Kansas leaders now have a better road map to improve health delivery. Last Tuesday evening, August 14th 2012, seventy three (73) Harper County residents met at Chaparral High School to review county health statistics, document county level health delivery strengths and discussed/recorded health areas of improvement & change.

Information gathered from Town Hall came from a diversified mix of community leaders i.e. all age groups, elected officials, business owners, farmers, churches, schools and providers. "I have received a lot of positive comments from our meeting and want to thank our community for their community support and participation" stated Sherry Houston, Harper County Health Department Administrator

At the beginning of May, Harper County Health Department in partnership with Anthony Medical Center and Harper Hospital District 5 retained Vince Vandehaar MBA from VVV Research & Development INC, an independent health research & consulting firm to conduct and complete this assessment. Partial funding for this work (a mini-grant) was granted to Harper County Health Department from the Kansas Rural Health Options Project.

All Town Hall input collected will be integrated into a public community health needs assessment report, which will be released on October 1, 2012. For information about this health assessment contact either Kim Cinelli; CEO Harper County Hospital (620-896-7324), Bryant Anderson; CEO Anthony Medical Center (620- 842- 5111 or Sherry Houston, LBSW (620-842-5132).

We greatly appreciate the community support and participation for the Harper County Community Health Needs Assessment Town Hall Meeting.

Results of the data collected will be available to the public once it is compiled into a report format.

Anthony Medical Center

Harper Hospital District #5

Harper County Health Department/Harper County Home Health Agency

CHNA report
questions contact :



Vince Vandelaar, MBA
VVV Marketing & Development INC.
***Adjunct Professor / Professional Consulting
Services***

601 N Mahaffie, Olathe, KS 66061
(913) 302-7264 (C)
vmlvandelaar@aol.com
LinkedIn: vandelaar
***[http://sites.google.com/site/vvvresearchdevelo
pment/](http://sites.google.com/site/vvvresearchdevelopment/)***